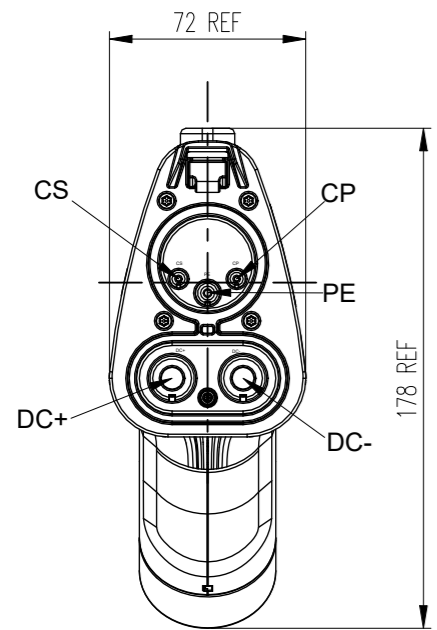


Amphenol PCD SZ
ORIGINAL
PDF Format
R&D

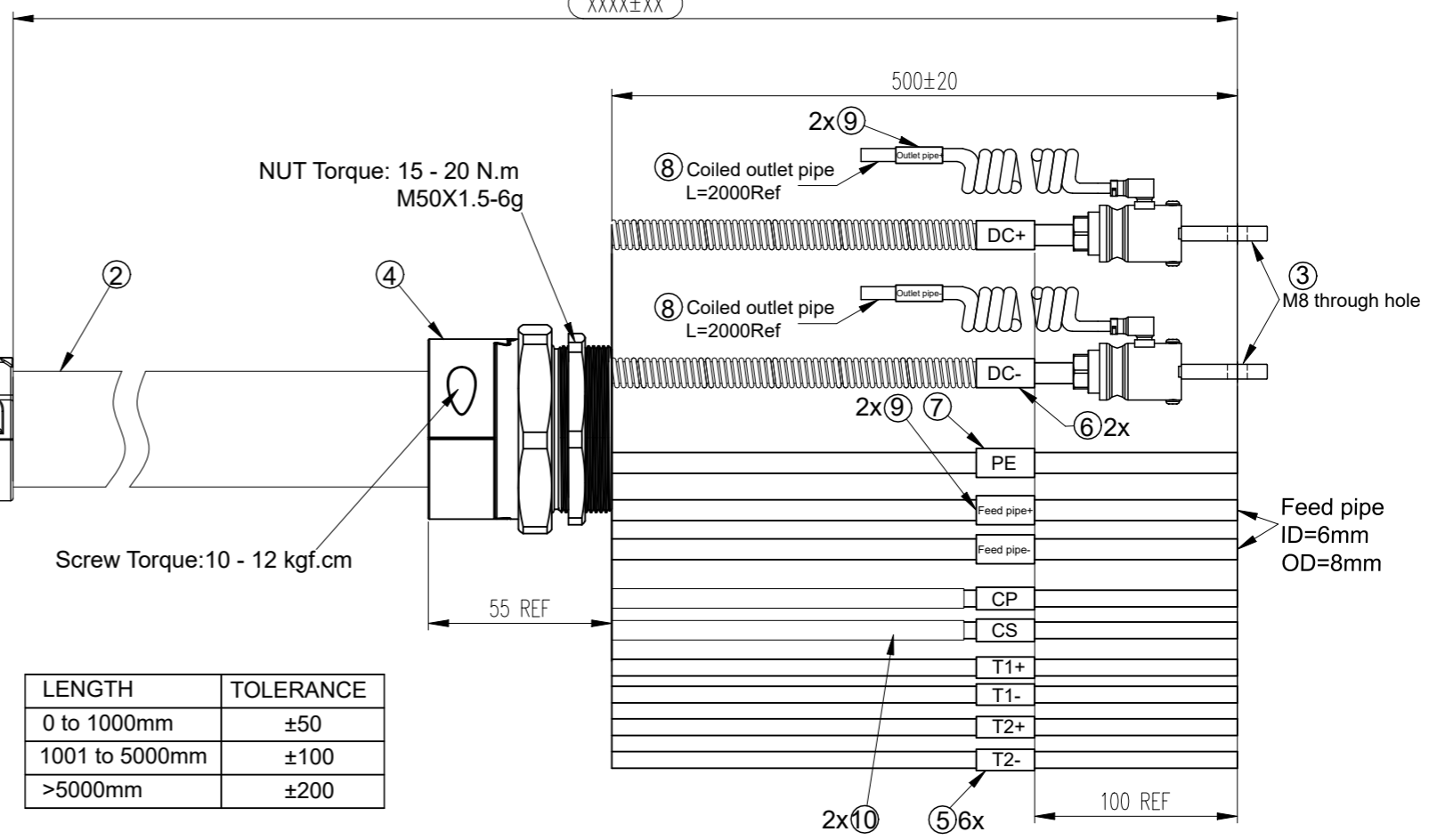
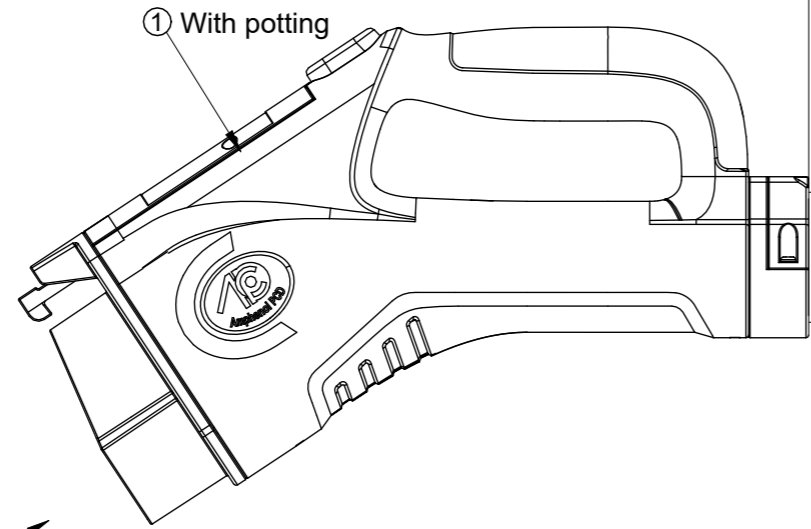
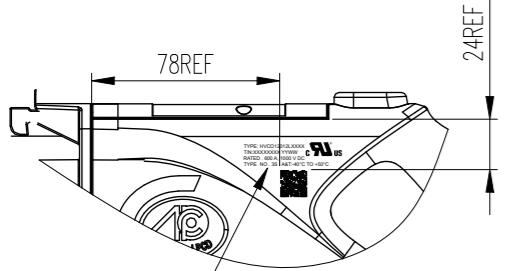
安费诺精密连接器(深圳)有限公司
Amphenol PCD Shenzhen
受控文件
2025年10月9日

REV	ECN	DESCRIPTION	DATE	MODIFIED
1		RELEASE	Aug-15-2025	
2	R09402	UPDATED NOTED	Aug-30-2025	



Front view of plug

Laser marking on plug

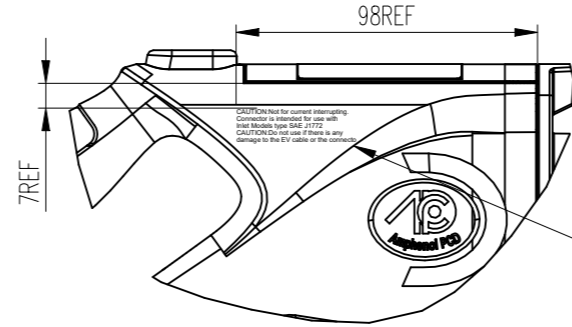
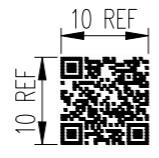


LENGTH	TOLERANCE
0 to 1000mm	±50
1001 to 5000mm	±100
>5000mm	±200

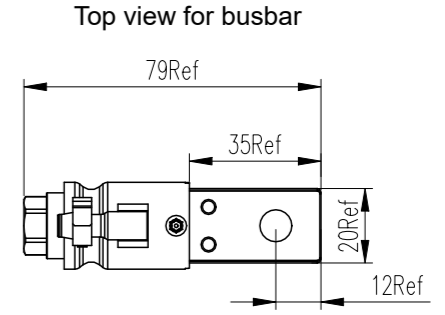
NUT Torque: 15 - 20 N.m
M50X1.5-6g

Screw Torque: 10 - 12 kgf.cm

QR code Content including:
Part number
#Work order number
#Serial number ex:0001
(ex:HVCO12012LXXXX#XXXXXXXX#XXXX)



CAUTION: Not for current interrupting.
Connector is intended for use with
Inlet Models type SAE J1772
CAUTION: Do not use if there is any
damage to the EV cable or the connector.

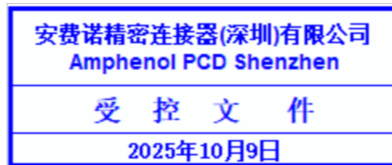
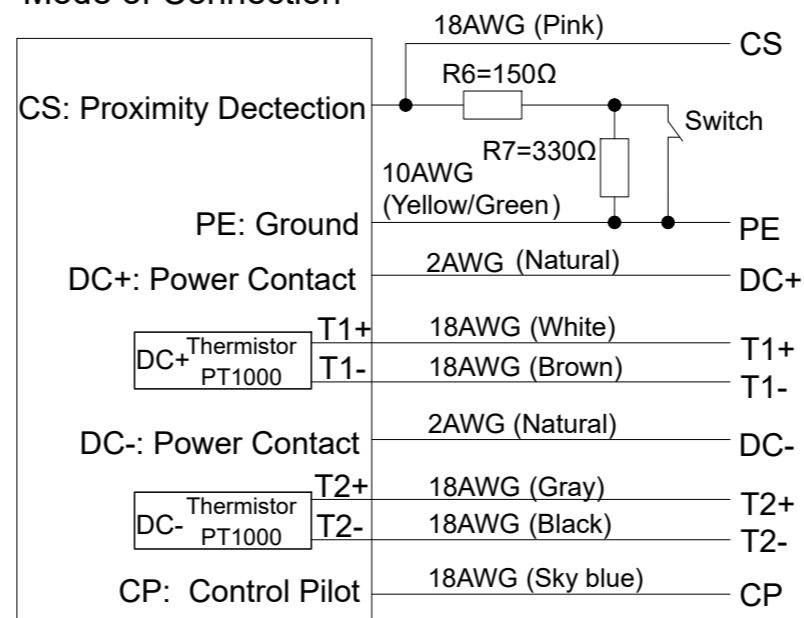


TYPE: HVCO12012LXXXX
T/N: XXXXXXXX YYWW
RATED . 600 A, 1000 V DC
TYPE NO . 3S A&T: -40°C to +50°C
T/N: XXXXXXXX YYWW
YYWW: Year/Week
XXXXXXXX: Work order number+batch number
LXXXX: XXXX=Cable length



DIMENSIONS	TOLERANCES	PROJECTION	CCS1 PLUG 600A--REPLACEABLE FRONT INSERT AND CONTACTS CABLE ASSEMBLY		
ANSI Y14.5M UNITS: MM CAD FILE	.X ± 0.50 .XX ± 0.05 ANGLES ± 2°		Amphenol PCD Shenzhen		
ORIGINAL	THIS DOCUMENT CONTAINS PROPRIETARY INFORMATION WHICH IS THE CONFIDENTIAL PROPERTY OF Amphenol PCD Shenzhen Co. Ltd Amphenol PCD Shenzhen Co. Ltd RESERVES THE RIGHT TO CLARIFY THIS DRAWING	CHKD	SIZE	DWG NO.	REV
		APPD	A3	C-HVCO12012LXXXX	2
			SCALE	1:1	SHEET 1 OF 2

Mode of Connection



*Notes:

1. Cable assembly data:

✦ Rated Voltage: 1000V DC (DC+, DC-), 30V DC (CP, CS);

✦ Rated Current: CP, CS: 2A;

DC+, DC-: 150A / Without coolant

600A / With coolant(rated current);

850A / With coolant peak*@RT;

✦ Insulation Resistance:

100MΩ Min 1000V DC (DC+, DC-, PE)

100MΩ Min 500V DC (CP, CS, Thermistor wire)

✦ Withstand Voltage:

3000V AC (DC+, DC-, PE);

500V AC (CP, CS, Thermistor wire)

✦ IP-Class: IP67 (enclosure); TYPE 3S;

✦ RoHS Compliance

2. Ambient Temperature: -40°C to +50°C (+55°C max,

Current reduction required, when the temperature is beyond 90°C)

3. IEC Plug reference: C-HVCO12012

4. Reference For, SAE J1772, UL2251

5. Cable Minimum Bending Radius: $\geq 8XOD$ (Static applications);

$\geq 10XOD$ (Dynamic applications)

◎6. Durability: 20000 cycles (Replaceable)

7. Working Pressure: 0 to 7bar; Coolant: DI-water+glycol or Dielectric coolant

8. Ground wire is suitable for isolated DC EV supply equipment as reference earth or function earth.

*only if user monitored coolant temperautre not excess 85°C, can support 850A peak once have sufficient cooling ability.

⑩	C210000080	SINGLE-WALL H.S.T: Ø5.0 BLACK	0.03	m
⑨	C210021008	SINGLE-WALL H.S.T: Ø8.0 WHITE	0.12	m
⑧	P01BN03154	OUTLET PIPE, COILED L=2000Ref, OD=8, ID=6	2.0	EA
⑦	P05B000006	SINGLE-WALL H.S.T: Ø6.0 WHITE	0.03	m
⑥	C210021010	SINGLE-WALL H.S.T: Ø14 WHITE	0.06	m
⑤	C210021011	SINGLE-WALL H.S.T: Ø2.4 WHITE	0.12	m
④	P02B000699	CABLE GLAND, M50*1.5	1	EA
③	P02B00099201	TERMINAL OF DC WIRE, M8	2	EA
②	CABLE	2x2AWG+TUBES+10AWG+8x18AWG Black OD=34±1	AR	m
①	HVCO12012	CCS1 600A COOLING PLUG, 1000V, BLACK, REPLACEABLE	1	EA
ITEM	P/N	DESCRIPTION	QTY	UNIT

SIZE	DWG NO.	REV
A3	C-HVCO12012LXXXX	2
SCALE	1:1	SHEET 2 OF 2