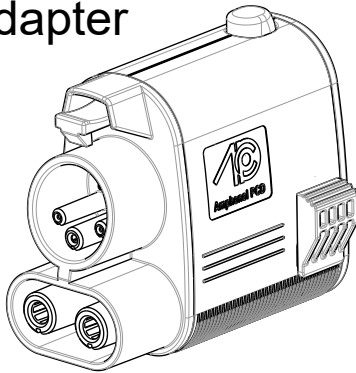


NACS to CCS1

DC Adapter



User Manual



Scan for more



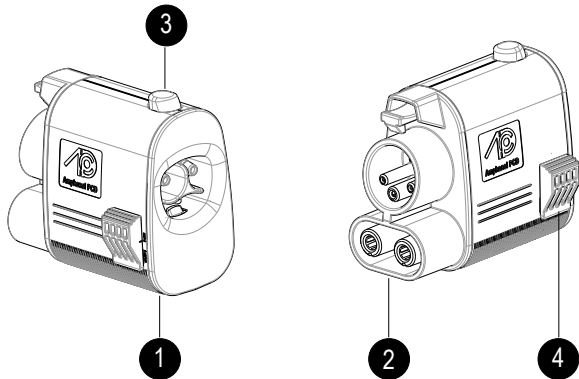
SAE J3400-1

UL2252 compliant

[www.amphenolhps.com](http://www.amphenolhps.com)

About the adapter

The Amphenol UL2252 certificated NACS to CCS1 DC adapter that enables CCS1 vehicles within the North American Charging System (NACS) Alliance to access NACS J3400 DC Charging Station. Access to NACS J3400 station is contingent upon your automaker's authorization. For further details on your vehicle and access availability, kindly contact your automaker.



- 1. NACS DC end of the adapter to attach to NACS J3400 Charging plug.
- 2. CCS1 end of the adapter to plug into the CCS1 port on the vehicle.
- 3. CCS1 Unlock Button, releases from vehicle.
- 4. NACS Unlock Button, releases from charger.

Before use

**Note:** Ensure the chosen NACS J3400 DC charging station supports CCS1 charging.

**Warning:** Do not store the Adapter outside of the storage temperature range of -40°F to 176°F.

Charging time

Charging time varies depending on the NACS J3400 DC Charging Station, electric vehicle specifications & environmental and battery temperature. Amphenol NACS to CCS1 DC Adapter includes built-in temperature monitoring, charging power may decrease if the terminal exceeds 176°F. Operation shuts off at a 194°F charging handle temperature.

IMPORTANT SAFETY INSTRUCTIONS

WARNINGS

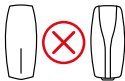


**High Voltage** - Handle with care and ensure proper connection before use.  
Risk of electric shock & serious injury.

Before using the Amphenol NACS to CCS1 DC adapter, please read all instructions. Follow the safety instructions and warnings in this guide to reduce the risk of fire, electrical shock or serious injury.

- For use with NACS J3400 DC Charging Stations ONLY. Not suitable for use with an AC charger. Misuse may result in damage and safety hazards.

Not suitable for use with:  
• AC Chargers



- This adapter is designed only for charging a CCS1 vehicle. Don't use it for any other purpose or with any other vehicle or object.
- Stop charging session before disconnecting.
- Don't use the adapter if it is defective, appears cracked, frayed, broken or otherwise damaged.
- Don't touch the end terminals of the adapter with sharp metallic objects, such as wire, tools or needles.
- Don't attempt to open, disassemble, repair or modify the adapter.
- Protect from moisture, water, and other foreign objects.
- Don't place fingers in any contacts.
- If charging session is terminated due to thermal switch consider to decommissioning the adapter.
- Don't use solvents to clean the adapter.

Specifications

Compliant with:	UL2252 & SAE J3400-1
Current:	Air cool 380A rated, Liquid cooling: 500A@25min 600A@10min (Amphenol internal testing)
Rated voltage (I/O):	1000V DC
Thermal switch:	167°F ± 18°F & 185°F ± 18°F
Waterproof rating:	Type 3R (mated), IP67 (enclosure)
Operating temperature:	-40°F to 194°F
Ambient temperature:	-40°F to 104°F
Storage temperature:	-40°F to 176°F
Product type:	NACS to CCS1 adapter DC
Net weight:	1.87lb
Materials:	PC / PA66 / Copper

**Disclaimer:** Amphenol NACS to CCS1 DC Adapter is exclusively intended for safe use with CCS1 compatible vehicles authorized by NACS J3400 DC Charging Station Access. Contact your vehicle supplier for detailed compatibility information.

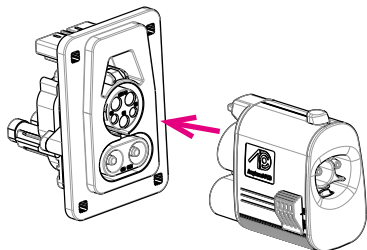
Troubleshooting

If a charging error occurs, check the vehicle central display, or the display on the charging station for information and guidance.

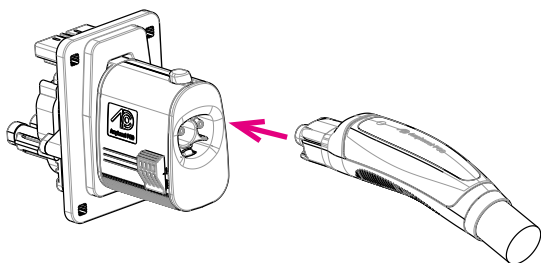
## Use the adapter in either way below:

### A: Insert the adapter into vehicle's port first.

1. Align the adapter plug with vehicle's charge port, and fully insert the plug into the port.

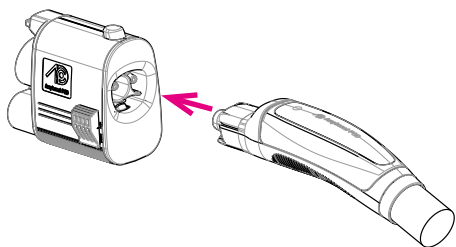


2. Press the NACS J3400 DC Charging cable plug into the inlet end of the adapter until it is fully seated (audible "click").

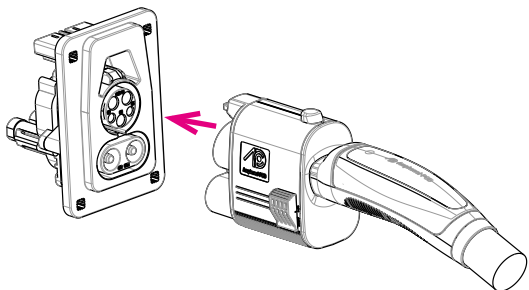


### B: Press the plug into adapter first.

1. Press the NACS J3400 DC Charging cable plug into the inlet end of the adapter until it is fully seated (audible "click").



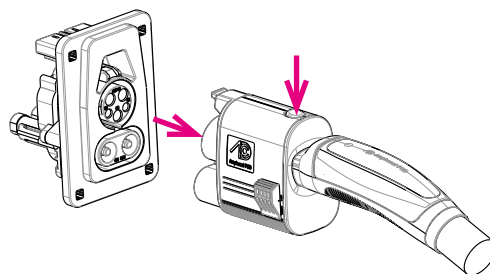
2. Align the adapter plug with vehicle's charge port, and fully insert the plug into the port.



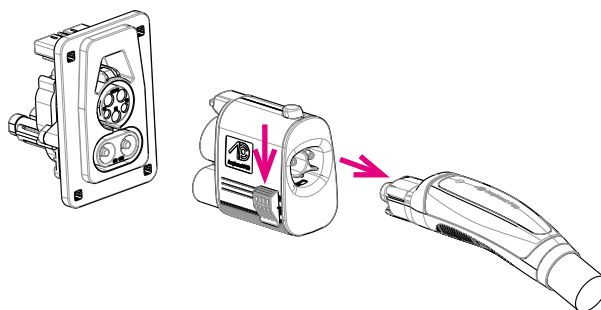
## Remove the adapter in either way below:

### A: Pull the adapter with plug out of the vehicle first.

1. When charging is complete, remove the plug with adapter from the vehicle with pressing the CCS1 Unlock Button on the top of the adapter.

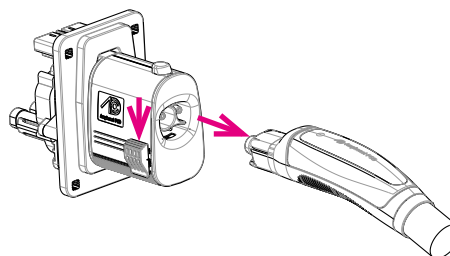


2. Pull the plug out of the adapter with pressing the NACS Unlock Button on the side of the adapter.



### B: Pull the plug out of the adapter first.

1. When charging is complete, pull the plug out of the adapter with pressing the NACS Unlock Button on the side of the adapter.



2. Remove the adapter from the vehicle with pressing the CCS1 Unlock Button on the top of the adapter.

