



# LVRC

Low voltage rectangular connector

PRODUCT INTRODUCTION .....	2
LVRC 26 PIN .....	3
PLUG .....	4
SOCKET .....	5
HOW TO ORDER .....	7
LVRC 35 PIN .....	8
PLUG .....	9
SOCKET .....	10
HOW TO ORDER .....	12
LVRCK 35 PIN .....	13
PLUG .....	14
SOCKET .....	15
HOW TO ORDER .....	17
HVRC 12 PIN .....	18
PLUG .....	19
SOCKET .....	20
HOW TO ORDER .....	22



Low Voltage Rectangular Connectors light weight, multiple coding positions, 26 & 35 position low voltage available, also we provide 12 position high voltage connectors are designed to meet USCAR-2, USCAR-37 specifications. With a current carrying up to 13A, 250V and 12 position up to 800V, the LVRC connectors can be used in many hybrid and electric vehicle device applications.

Receptacle can be front or rear mounted.



#### KEY FEATURES

Easy to install, reliable connection

Multiple coding positions

Contacts can be remove and replace by tools

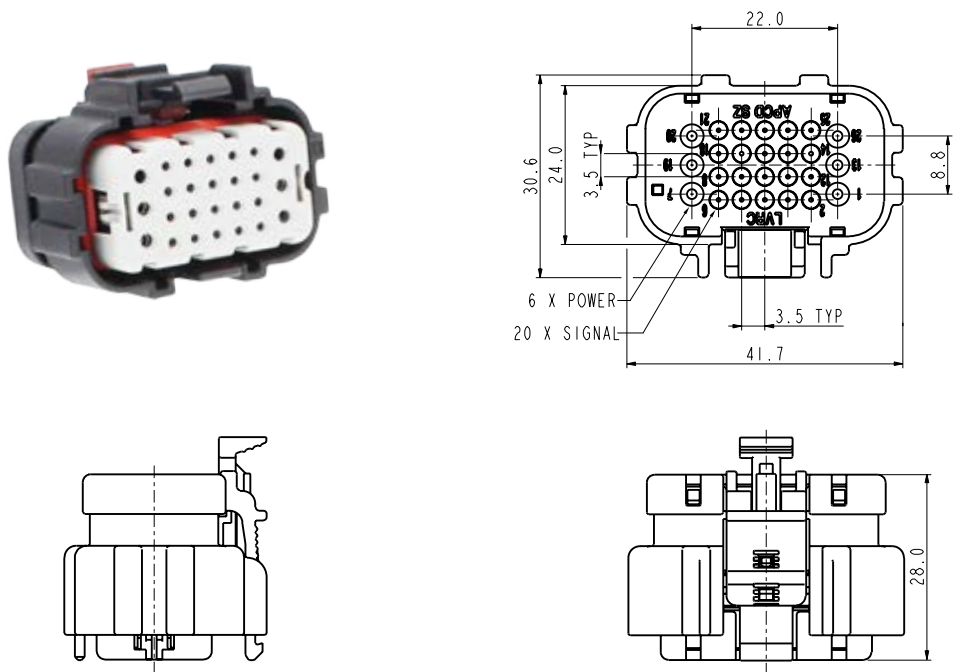
Sealing, IP67 mated

Economical

MECHANICAL	
Durability	100 mating cycles max
Wire range	Power: 18 to 14 AWG Wire insulation OD: 2.2 to 3.0 mm Signal: 22 to 18 AWG Wire insulation OD: 1.35 to 2.5 mm
Connection type	Crimping
ELECTRICAL	
Rated current	Power: 13A Signal: 5A
Rated voltage	250V AC / 300V DC
Insulator resistance	$\geq 100\text{m}\Omega$ (500V DC)
Temperature rise	$\leq 55\text{K}$
ENVIRONMENTAL	
Temperature range	-40°C to 125°C
Humidity	90% to 95%
Sealing	IP67 (mated)
Inflammability	UL94-V0
STANDARDS	
USCAR-2	
USCAR-37	
RoHS	
MATERIAL	
Housing	PA66
Contacts	Copper alloy, tin plating
Insert	Silicone

PLUG

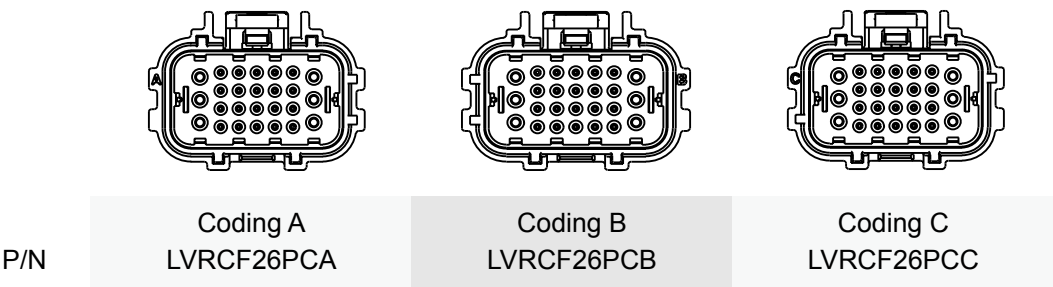
26 PIN PLUG

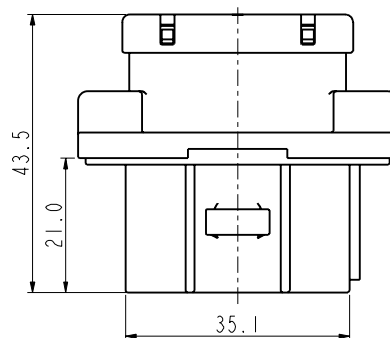
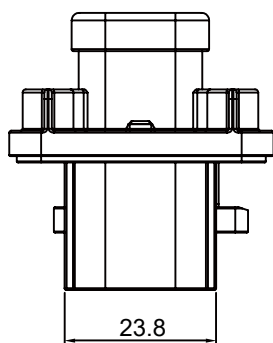
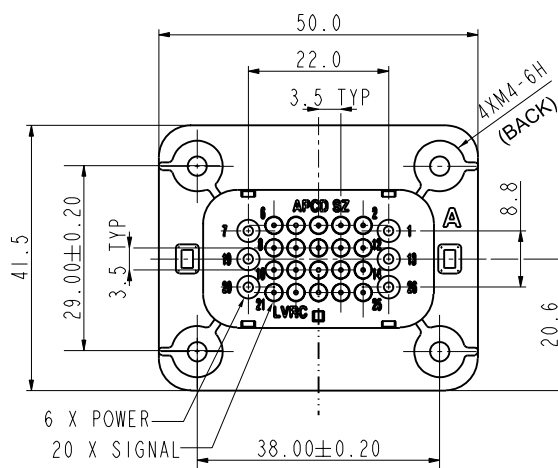


CONTACTS

All connectors do not include contacts. Please order them separately (ref: P/N below)			
CONTACTS (Female contact)			
POWER (Female contact)	SIGNAL (Female contact)	SEAL (POWER)	SEAL (SIGNAL)
P/N: LVRC16PC01S	P/N: LVRC20PC01S	P/N: LVRC16LP	P/N: LVRC20LP

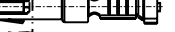



INSERT ORIENTATIONS



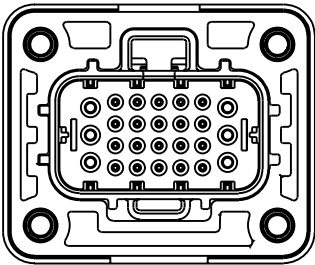
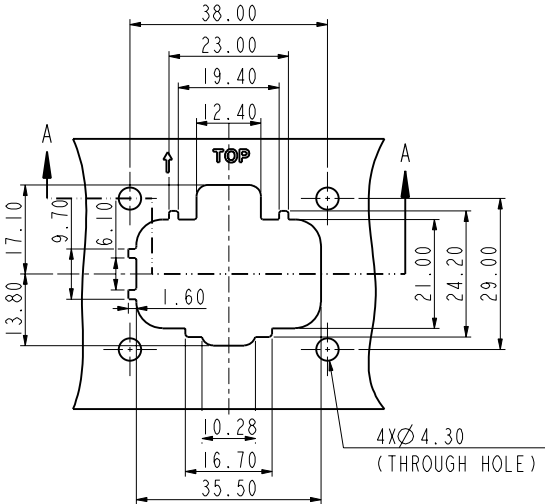
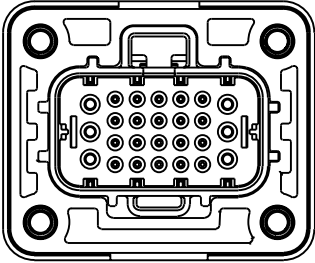
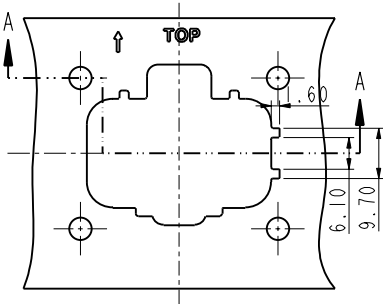
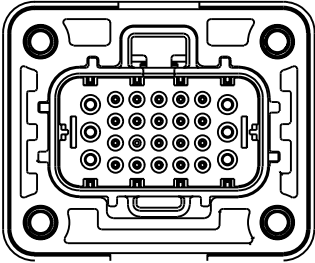
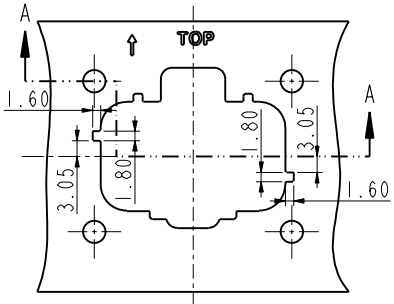


All connectors do not include contacts. Please order them separately (ref: P/N below)

## CONTACTS (Male contact)

<b>POWER (Male contact)</b>	<b>SIGNAL (Male contact)</b>	<b>SEAL (POWER)</b>	<b>SEAL (SIGNAL)</b>
P/N: LVRC16SC01S	P/N: LVRC20SC01S	P/N: LVRC16LP	P/N: LVRC20LP
			

PANEL MOUNTING DIMENSION

PART NUMBER	INSERT ORIENTATIONS	PANEL MOUNTING DIMENSION
LVRM26SCRA	 <p>Coding A</p>	
LVRM26SCRB	 <p>Coding B</p>	
LVRM26SCRC	 <p>Coding C</p>	

## HOW TO ORDER

## PLUG

	LVRC	F	26	P	C	A
<b>Contact type:</b> F: Female contact						
<b>Number of contacts:</b> 26						
<b>Connector type:</b> P: Plug						
<b>Connection type:</b> C: Crimping						
<b>Coding / Alternate position:</b> A: Coding A B: Coding B C: Coding C						

## SOCKET

	LVRC	M	26	S	C	R	A
<b>Contact type:</b> M: Male contact							
<b>Number of contacts:</b> 26							
<b>Connector type:</b> S: Socket							
<b>Connection type:</b> C: Crimping							
<b>Socket mounting type:</b> R: Rear mounted							
<b>Coding / Alternate position:</b> A: Coding A B: Coding B C: Coding C							



## LVRC 35 PIN



### KEY FEATURES

Easy to install, reliable connection

Multiple coding positions

Receptacle available in front or rear mounted

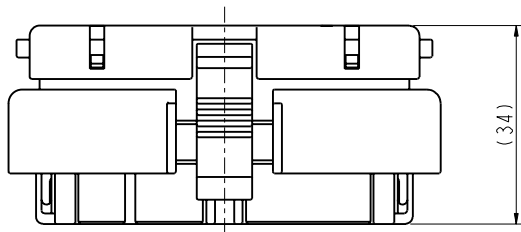
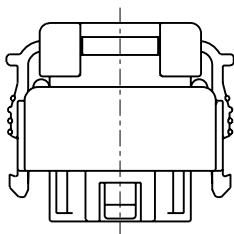
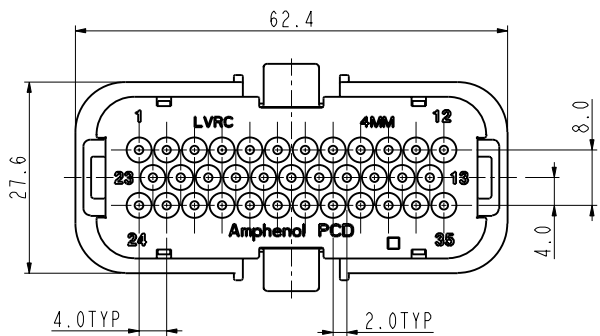
Contacts can be remove and replace by tools

Sealing, IP67 mated

Economical

MECHANICAL	
Durability	50 mating cycles max
Wire range	22 to 14 AWG Wire insulation OD: 1.7 to 2.7 mm
Connection type	Crimping
ELECTRICAL	
Rated current	8A (22 to 16 AWG) 13A (14 AWG, 6POS LOADED, MAX)
Rated voltage	250V AC
Insulator resistance	≥ 100mΩ (500V DC)
Temperature rise	≤ 55K
ENVIRONMENTAL	
Temperature range	-40°C to 125°C
Humidity	90% to 95%
Sealing	IP67 (mated)
Inflammability	UL94-V0
STANDARDS	
USCAR-2	
USCAR-37	
RoHS	
MATERIAL	
Housing	PA66
Contacts	Copper alloy, tin plating
Insert	Silicone

35 PIN PLUG

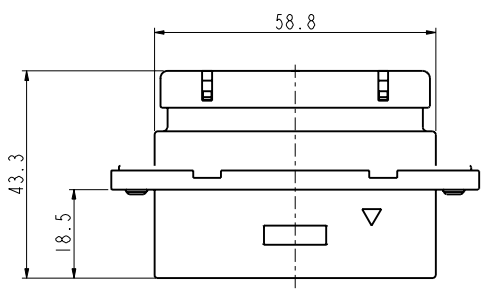
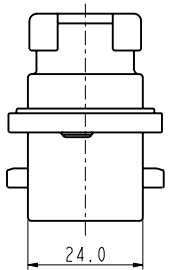
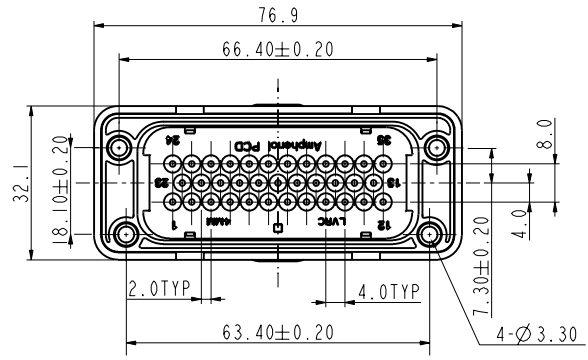


CONTACTS

All connectors do not include contacts. Please order them separately (ref: P/N below)	
CONTACTS (Female contact)	
Female contact	Sealing plug
P/N: C310023101	P/N: C220011207

SOCKET

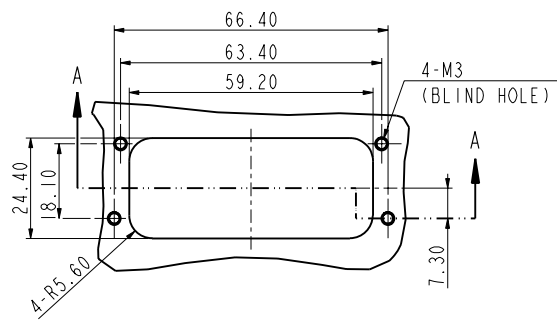
35 PIN SOCKET: FRONT MOUNTED



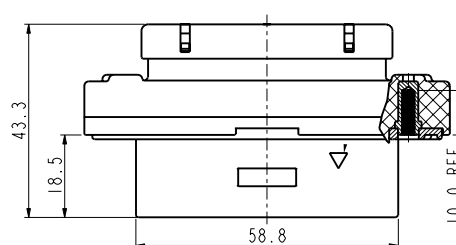
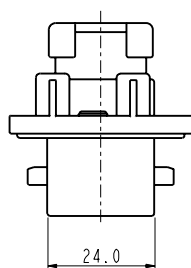
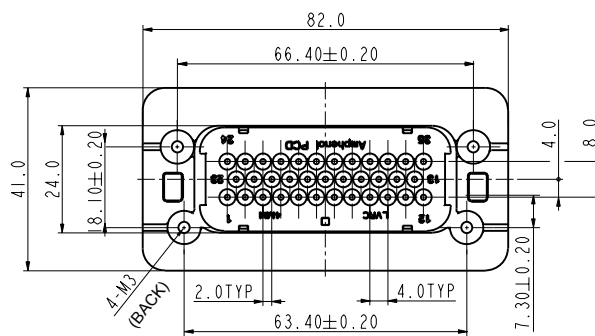
CONTACTS

All connectors do not include contacts. Please order them separately (ref: P/N below)	
CONTACTS (Male contact)	
Male contact	Sealing plug
P/N: C310023102	P/N: C220011207

PANEL MOUNTING DIMENSION



## 35 PIN SOCKET: REAR MOUNTED



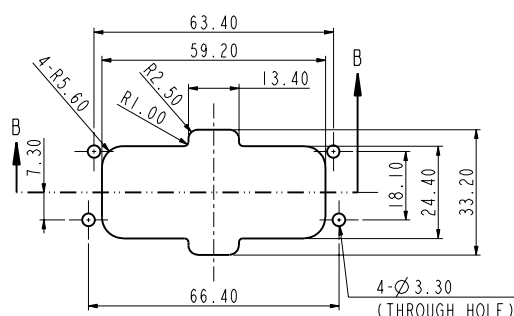
## CONTACTS

All connectors do not include contacts. Please order them separately (ref: P/N below)

### CONTACTS (Male contact)

Male contact	Sealing plug
P/N: C310023102	C220011207

## PANEL MOUNTING DIMENSION



# HOW TO ORDER

## HOW TO ORDER

### PLUG

	LVRC	F	35	P	C
<b>Contact type:</b> F: Female contact					
<b>Number of contacts:</b> 35					
<b>Connector type:</b> P: Plug					
<b>Connection type:</b> C: Crimping					

### SOCKET

	LVRC	M	35	S	C	F
<b>Contact type:</b> M: Male contact						
<b>Number of contacts:</b> 35						
<b>Connector type:</b> S: Socket						
<b>Connection type:</b> C: Crimping						
<b>Socket mounting type:</b> F: Front mounted R: Rear mounted						



#### KEY FEATURES

Easy to install, reliable connection

Multiple coding positions

Contacts can be remove and replace by tools

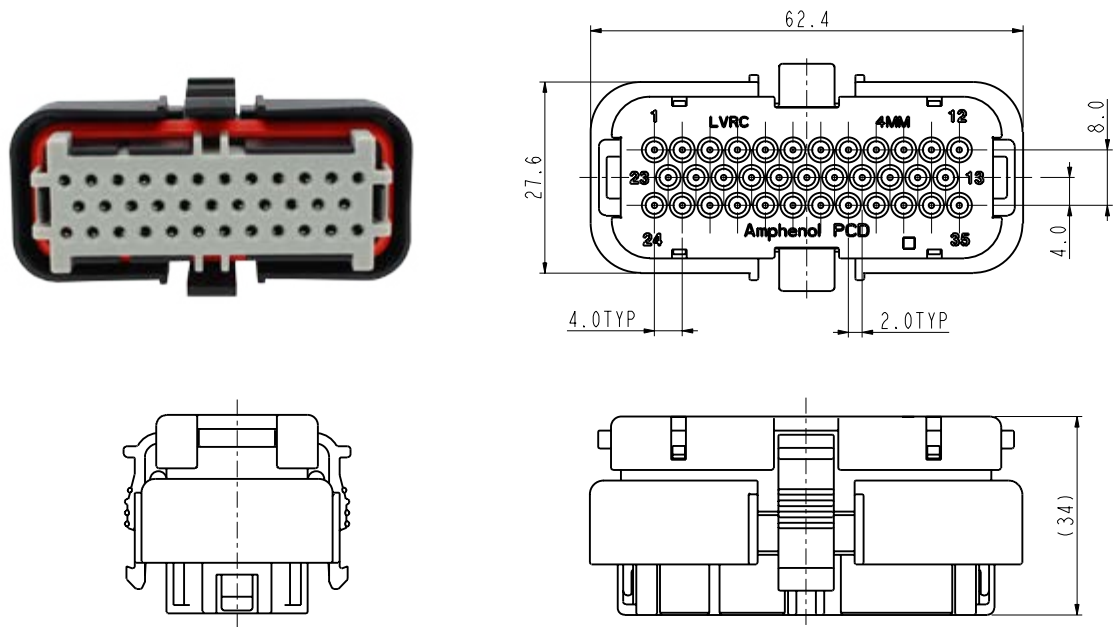
Sealing, IP67 mated

Economical

MECHANICAL	
Durability	50 mating cycles max
Wire range	22 to 18 AWG Wire insulation OD: 1.35 to 2.5 mm
Connection type	Crimping
ELECTRICAL	
Rated current	5A
Rated voltage	250V AC / 300V DC
Insulator resistance	$\geq 100\text{m}\Omega$ (500V DC)
Temperature rise	$\leq 55\text{K}$
ENVIRONMENTAL	
Temperature range	-40°C to 125°C
Humidity	90% to 95%
Sealing	IP67 (mated)
Inflammability	UL94-V0
STANDARDS	
USCAR-2	
USCAR-37	
RoHS	
MATERIAL	
Housing	PA66
Contacts	Copper alloy, tin plating
Insert	Silicone

PLUG

35 PIN PLUG



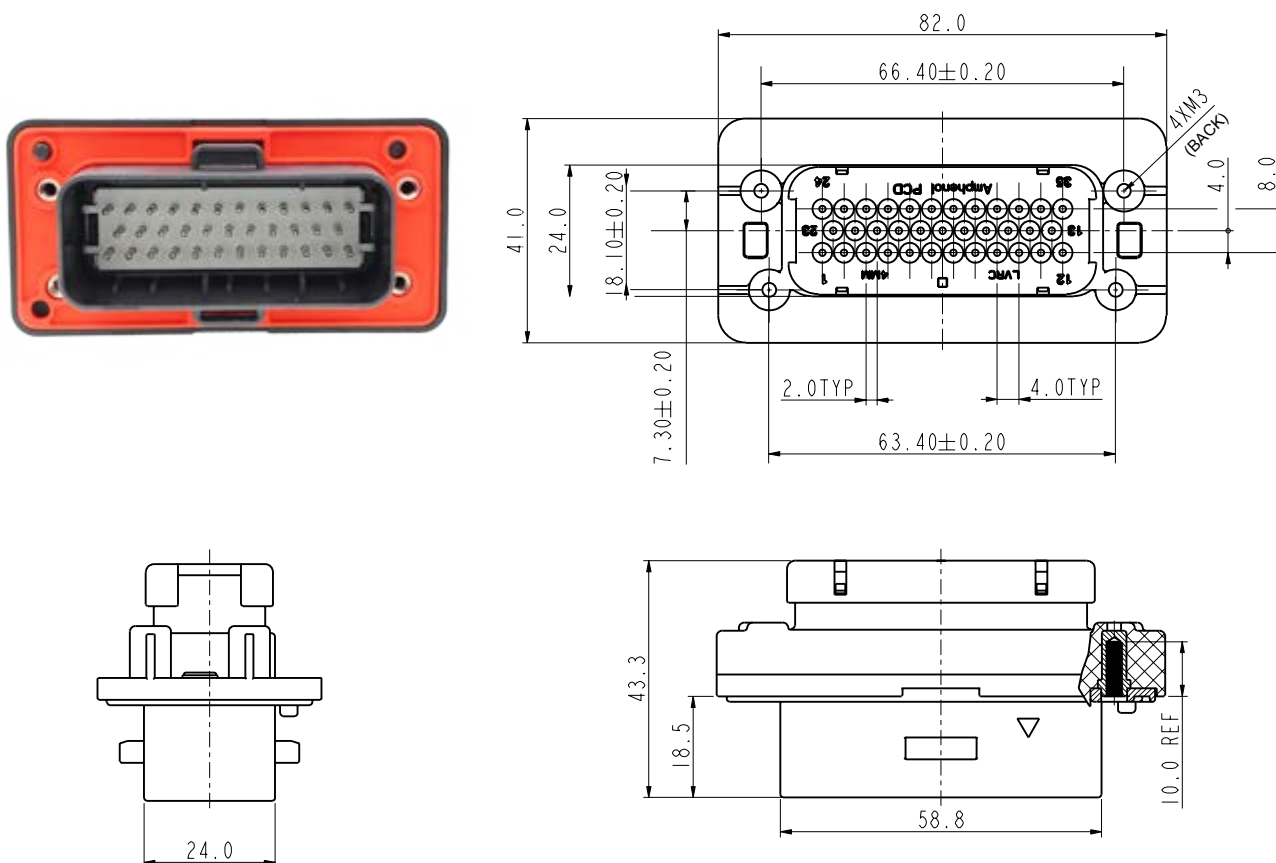
CONTACTS

All connectors do not include contacts. Please order them separately (ref: P/N below)	
CONTACTS (Female contact)	
Female contact	Sealing plug
P/N: C310023101	P/N: C220011207

PANEL MOUNTING DIMENSION

P/N	Coding A LVRCKF35PCAS1	Coding B LVRCKF35PCBS1	Coding C LVRCKF35PCCS1

## 35 PIN SOCKET



## CONTACTS

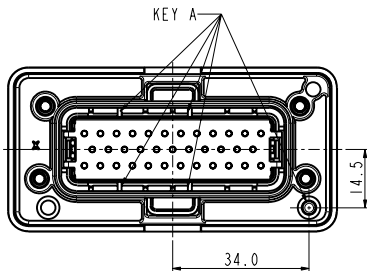
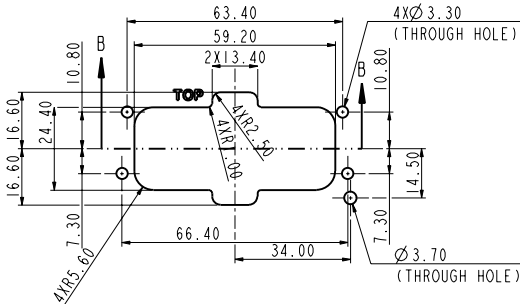
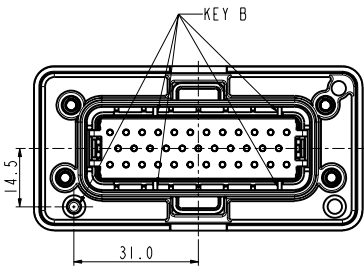
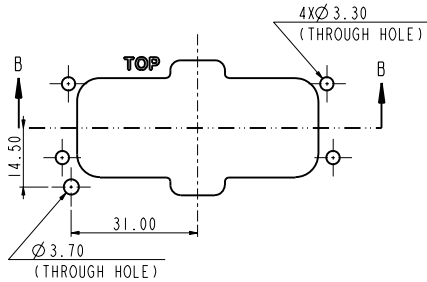
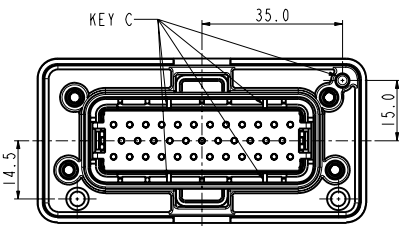
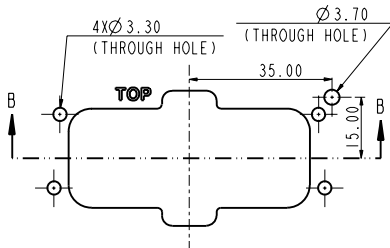
All connectors do not include contacts. Please order them separately (ref: P/N below)

### CONTACTS (Male contact)

Male contact	Sealing plug
P/N: C310023102	P/N: C220011207



PANEL MOUNTING DIMENSION

PART NUMBER	INSERT ORIENTATIONS	PANEL MOUNTING DIMENSION
LVRCKM35SCRAS1		
LVRCKM35SCRBS1		
LVRCKM35SCRCS1		

## HOW TO ORDER

## PLUG

LVRCK	F	35	P	C	A	S1
<b>Contact type:</b> <b>F:</b> Female contact						
<b>Number of contacts:</b> 35						
<b>Connector type:</b> <b>P:</b> Plug						
<b>Connection type:</b> <b>C:</b> Crimping						
<b>Coding / Alternate position:</b> <b>A:</b> Coding A <b>B:</b> Coding B <b>C:</b> Coding C						

## SOCKET

LVRCK	M	35	S	C	R	A	S1
<b>Contact type:</b> <b>M:</b> Male contact							
<b>Number of contacts:</b> 35							
<b>Connector type:</b> <b>S:</b> Socket							
<b>Connection type:</b> <b>C:</b> Crimping							
<b>Socket mounting type:</b> <b>R:</b> Rear mounted							
<b>Coding / Alternate position:</b> <b>A:</b> Coding A <b>B:</b> Coding B <b>C:</b> Coding C							

## HVRC 12 PIN



### KEY FEATURES

Easy to install, reliable connection

Multiple coding positions

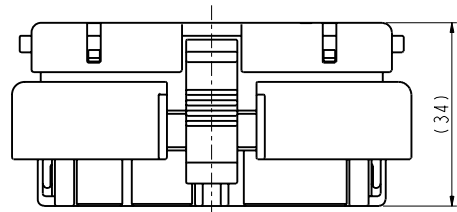
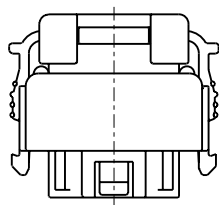
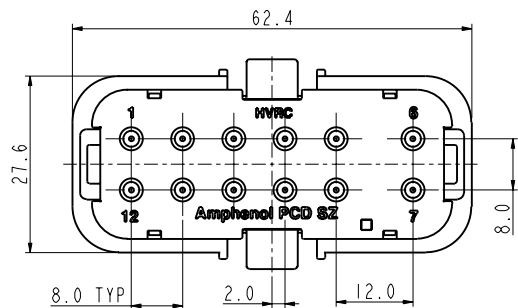
Contacts can be remove and replace by tools

Sealing, IP67 mated

Economical

MECHANICAL	
Durability	50 mating cycles max
Wire range	22 to 18 AWG Wire insulation OD: 1.35 to 2.5 mm
Connection type	Crimping
ELECTRICAL	
Rated current	5A
Rated voltage	800V AC
Insulator resistance	$\geq 100\text{m}\Omega$ (500V DC)
Temperature rise	$\leq 55\text{K}$
ENVIRONMENTAL	
Temperature range	-40°C to 125°C
Humidity	90% to 95%
Sealing	IP67 (mated)
Inflammability	UL94-V0
STANDARDS	
USCAR-2	
USCAR-37	
RoHS	
MATERIAL	
Housing	PA66
Contacts	Copper alloy, tin plating
Insert	Silicone

12 PIN PLUG



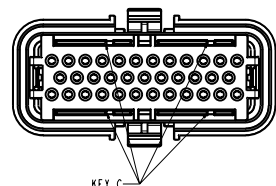
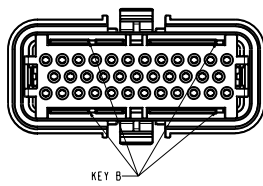
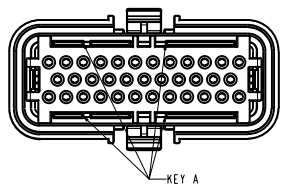
CONTACTS

All connectors do not include contacts. Please order them separately (ref: P/N below)

CONTACTS (Female contact)

Female contact	Sealing plug
P/N: C310023101	P/N: C220011207

PANEL MOUNTING DIMENSION



P/N

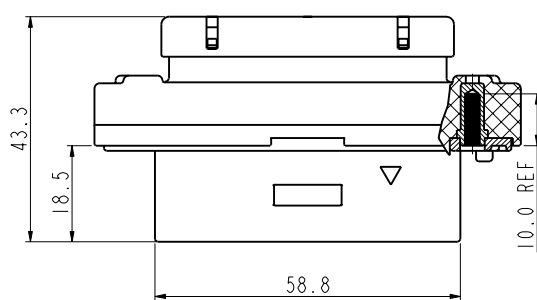
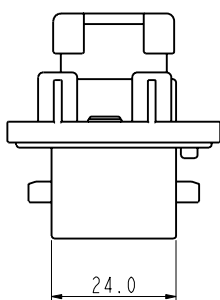
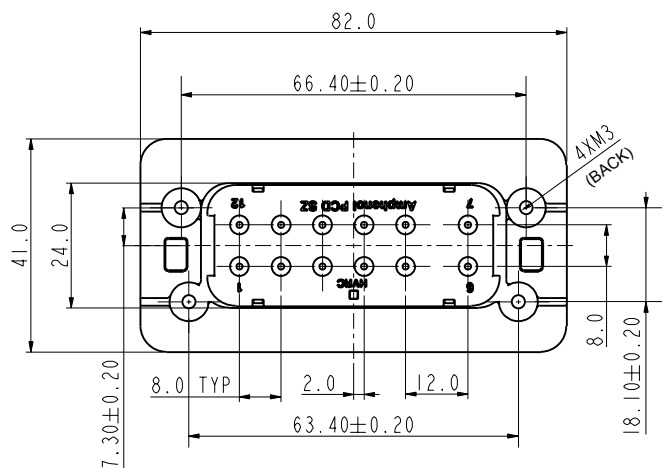
Coding A  
HVR CF12PCA

Coding B  
HVR CF12PCB

Coding C  
HVR CF12PCC

SOCKET

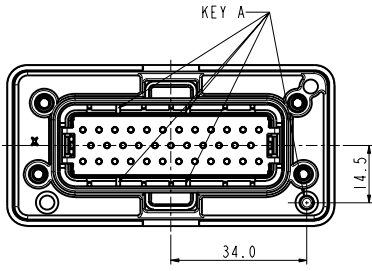
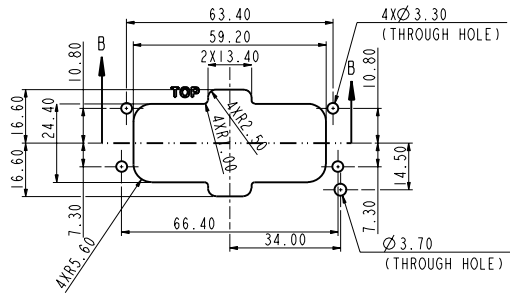
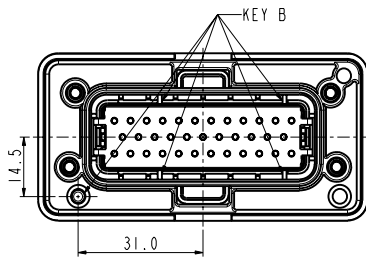
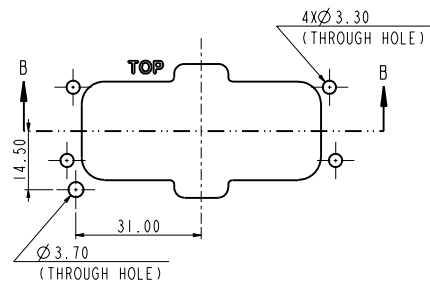
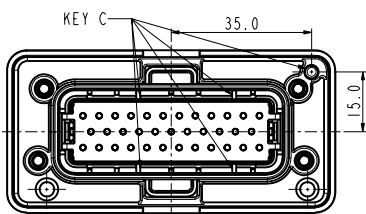
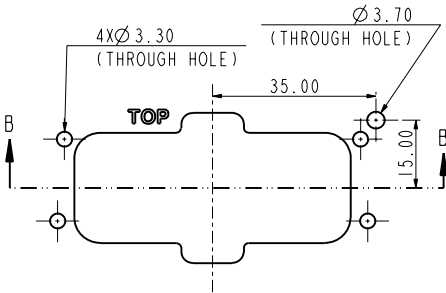
12 PIN SOCKET



CONTACTS

All connectors do not include contacts. Please order them separately (ref: P/N below)	
CONTACTS (Male contact)	
Male contact	Sealing plug
P/N: C310023102	P/N: C220011207

## PANEL MOUNTING DIMENSION

PART NUMBER	INSERT ORIENTATIONS	PANEL MOUNTING DIMENSION
HVRCM12SCRA		
HVRCM12SCRB		
HVRCM12SCRC		

# HOW TO ORDER

## HOW TO ORDER

### PLUG

	HVRC	F	12	P	C	A	S1
<b>Contact type:</b> F: Female contact							
<b>Number of contacts:</b> 12							
<b>Connector type:</b> P: Plug							
<b>Connection type:</b> C: Crimping							
<b>Coding / Alternate position:</b> A: Coding A B: Coding B C: Coding C							
Version							

### SOCKET

	HVRC	M	12	S	C	R	A	S1
<b>Contact type:</b> M: Male contact								
<b>Number of contacts:</b> 12								
<b>Connector type:</b> S: Socket								
<b>Connection type:</b> C: Crimping								
<b>Socket mounting type:</b> R: Rear mounted								
<b>Coding / Alternate position:</b> A: Coding A B: Coding B C: Coding C								
Version								

## Amphenol PCD Shenzhen

Building C  
Da Gang Industrial Zone, Yu Tang Street  
Guang Ming District Shenzhen 518132  
China

Tel.: +86 755-8173-8000  
Email: [inquiry@amphenolpcd.com.cn](mailto:inquiry@amphenolpcd.com.cn)

[www.amphenolpcd.com.cn](http://www.amphenolpcd.com.cn)

### Notes:

Amphenol PCD Shenzhen has made every effort to ensure that the information contained in this catalog is accurate at the time of publication. Specifications or information stated in this publication are subject to change without notice.

Amphenol PCD Shenzhen reserves the right to clarify this catalog.