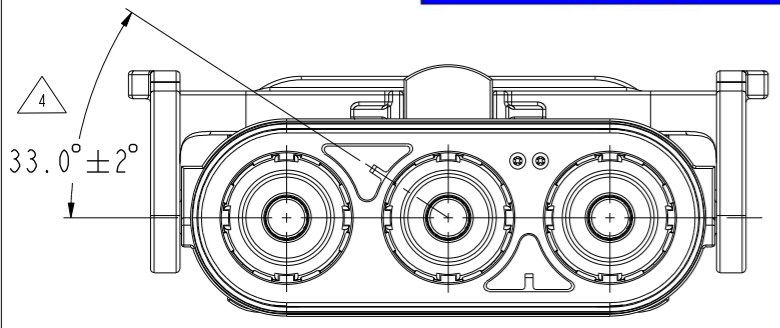
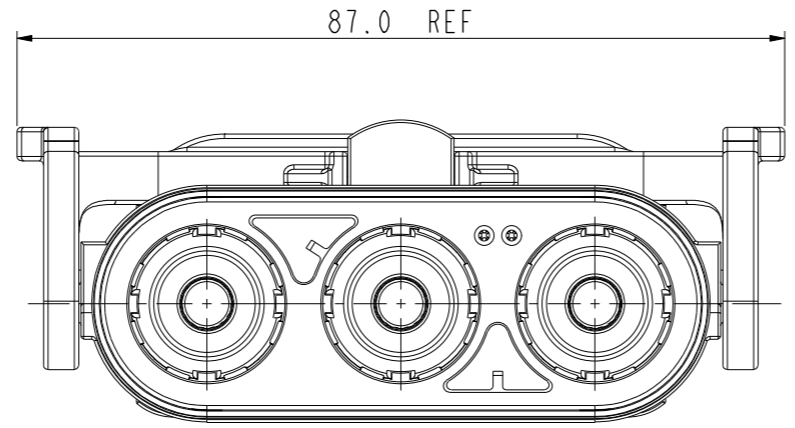


REV	ECN	DESCRIPTION	DATE	MODIFIED
2		FIRST RELEASE	2017.11.07	
3	R3409-N	SIZE CHANGE OF STERN COVER	2019.08.14	
4	R4010W	ADJUST THE DATA/CORRECT THE ERROR	2019.12.25	

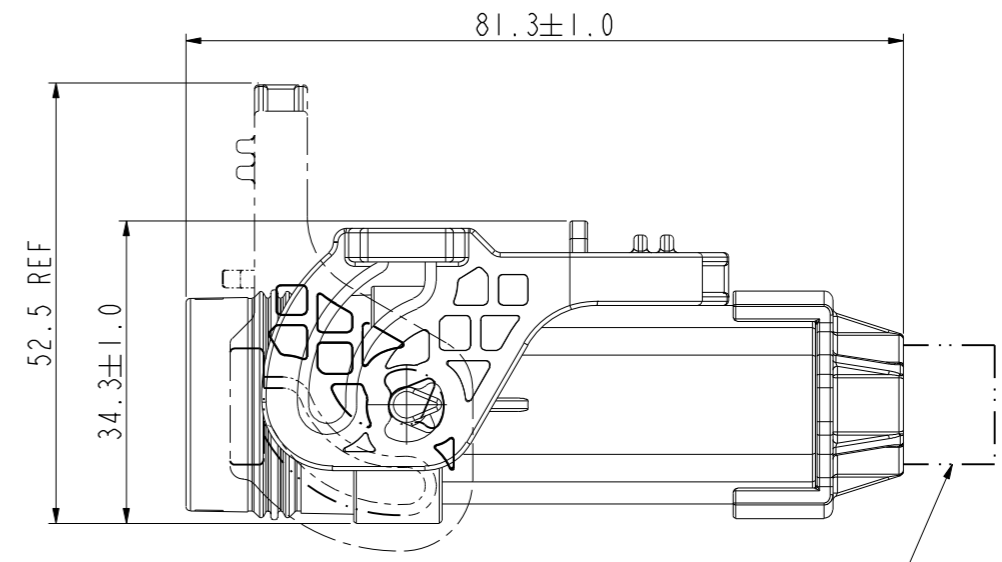
Amphenol PCDSZ
ORIGINAL
PDF Format
R&D



HVSL5600 06 3A
CODING A



HVSL5600 06 3B
CODING B



16~25MM^2 CABLE

NOTES:

- MATERIAL & FINISH:
 - △ PLASTIC BODY: ZINC ALLOY COLOR ZINC PLATED
 - POWER CONTACT: COPPER ALLOY SILVER PLATED
 - HVIL CONTACTS: COPPER ALLOY GOLD PLATED
 - SEAL RING: SI
- PART NUMBER DESCRIPTION:

TECHNICAL DATA

CURRENT RATE (25MM^2 CABLE)	120A @ AMBIENT 70°C	+
CURRENT RATE (16MM^2 CABLE)	80A @ AMBIENT 70°C	+
RATING VOLTAGE (OVERVOLTAGE CATEGORY II POLLUTION DEGREE 2)	1000V DC	+
OPERATING TEMPERATURE	-40~125°C	
DIELECTRIC WITHSTANDING VOLTAGE	3000V AC(RMS)	+
INSULATION RESISTANCE	100MΩ MIN.@25°C	+
DURABILITY	50 CYCLES	⊙
SHIELDING	YES	△
WATERPROOF (MATED CONDITION)	IP67, IP6K9K	+
PROTECTION LEVEL(UNMATED)	IP2XB	+
AMBIENT TEMPERATURE	-40~70°C	
RoHS	YES	+

+: CRITICAL CHARACTERISTICS/关键特性
⊙: IMPORTANT CHARACTERISTICS/重要特性

HVSL5 600 06 3X X XX

A: CODING A
B: CODING B

0: WITHOUT HVIL
1: WITH HVIL

25: CROSS-SECTION 25mm²
SHIELDING WIRE OD=11.9 ± 0.3mm

16: CROSS-SECTION 16mm²
SHIELDING WIRE OD=11.2 ± 0.25mm

DIMENSIONS	TOLERANCES	PROJECTION	TITLE		
ANSI Y14.5M UNITS: MM Pro/E FILE	.X ±0.5 .XX ±0.05 ANGLES ±0.5°		Amphenol Pcd Shenzhen		
ORIGINAL	THIS DOCUMENT CONTAINS PROPRIETARY INFORMATION WHICH IS THE CONFIDENTIAL PROPERTY OF AMPHENOL PCD SHENZHEN		ENGR	2017.11.07	
			CHKD	SIZE	DWG NO.
			APPD	A3	C-HVSL5600063XXXX
				REV	4
			CODE: 58982	SCALE: 1:1	SHEET 1 OF 2

C-HVSL5600063XXXX

C-HVSL5600063XXXX

ASSEMBLY P/N	ITEM	COMPONENT P/N	CABLE SIZE	DESCRIPTION	Q'TY	
HVSL600063X1XX	5	C2200036952	16mm2	END CAP (WIRE OD=11.2 ± 0.25mm)	3	
		C2200036951	25mm2	END CAP (WIRE OD=11.9 ± 0.3mm)	3	
	4	C2700036492	16mm2	CABLE SEAL (WIRE OD=11.2 ± 0.25mm)	3	
		C2700036491	25mm2	CABLE SEAL (WIRE OD=11.9 ± 0.3mm)	3	
	3	C200003641	25mm2	OUTER FERRULE	3	
		P03BM00326	16mm2	OUTER FERRULE	3	
	2	C4200036172	16mm2	SOCKET CONTACT ASSEMBLY	3	
		C4200036171	25mm2	SOCKET CONTACT ASSEMBLY	3	
	△4	1	SEE TABLE 1	N/A	MAIN BODY & WITH HVIL	1

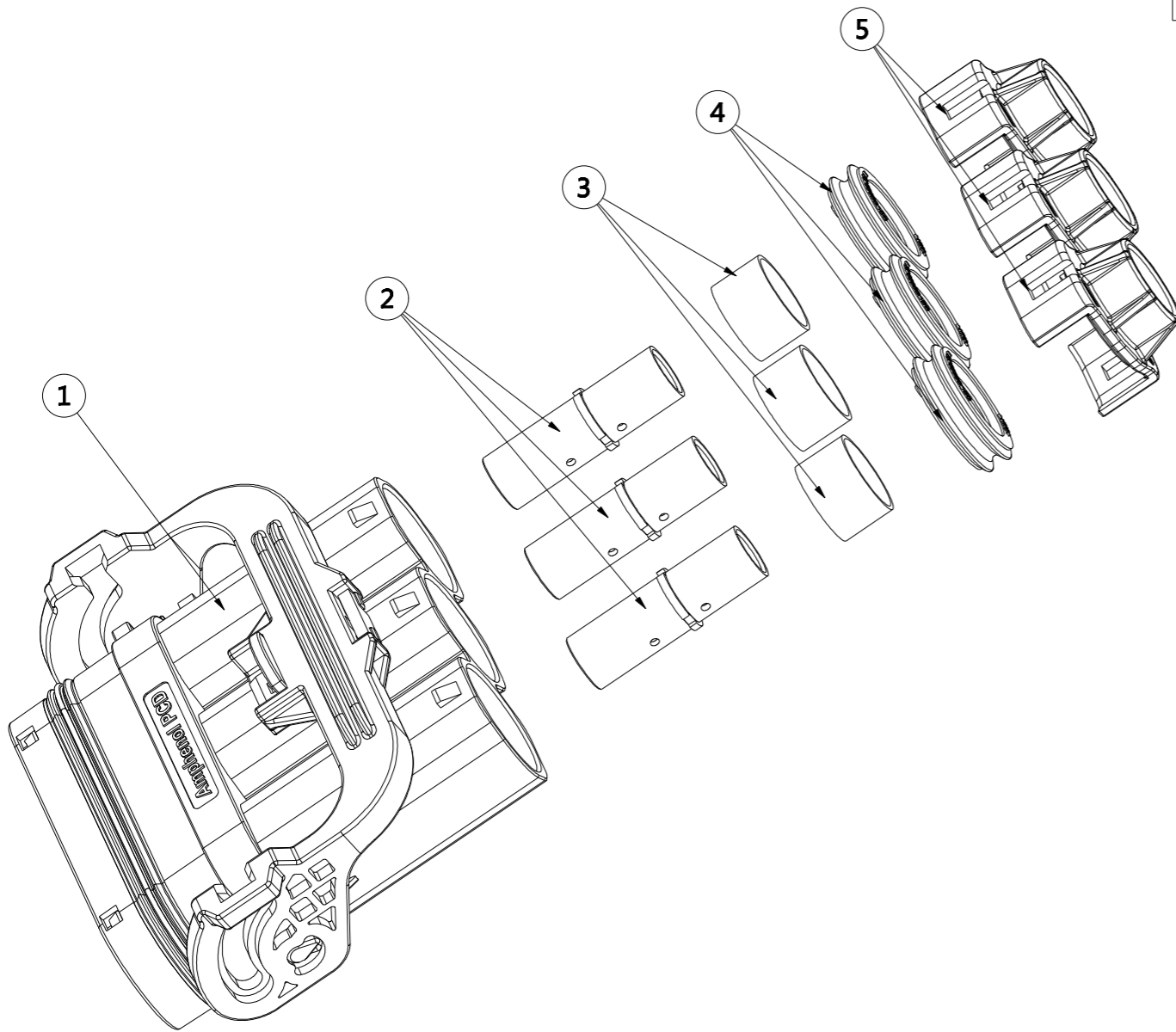


TABLE 1
HVSL600063X1 SELECTION:

MAIN BODY P/N	KEY X
HVSL600063A1	KEY A
HVSL600063B1	KEY B

TABLE 2
HVSL600063X0 SELECTION:

MAIN BODY P/N	KEY X
HVSL600063A0	KEY A
HVSL600063B0	KEY B

ASSEMBLY P/N	ITEM	COMPONENT P/N	CABLE SIZE	DESCRIPTION	Q'TY	
HVSL600063X0XX	5	C2200036952	16mm2	END CAP (WIRE OD=11.2 ± 0.25mm)	3	
		C2200036951	25mm2	END CAP (WIRE OD=11.9 ± 0.3mm)	3	
	4	C2700036492	16mm2	CABLE SEAL (WIRE OD=11.2 ± 0.25mm)	3	
		C2700036491	25mm2	CABLE SEAL (WIRE OD=11.9 ± 0.3mm)	3	
	3	C200003641	25mm2	OUTER FERRULE	3	
		P03BM00326	16mm2	OUTER FERRULE	3	
	2	C4200036172	16mm2	SOCKET CONTACT ASSEMBLY	3	
		C4200036171	25mm2	SOCKET CONTACT ASSEMBLY	3	
	△4	1	SEE TABLE 2	N/A	MAIN BODY & WITHOUT HVIL	1

C-HVSL600063XXXX

C-HVSL600063XXXX