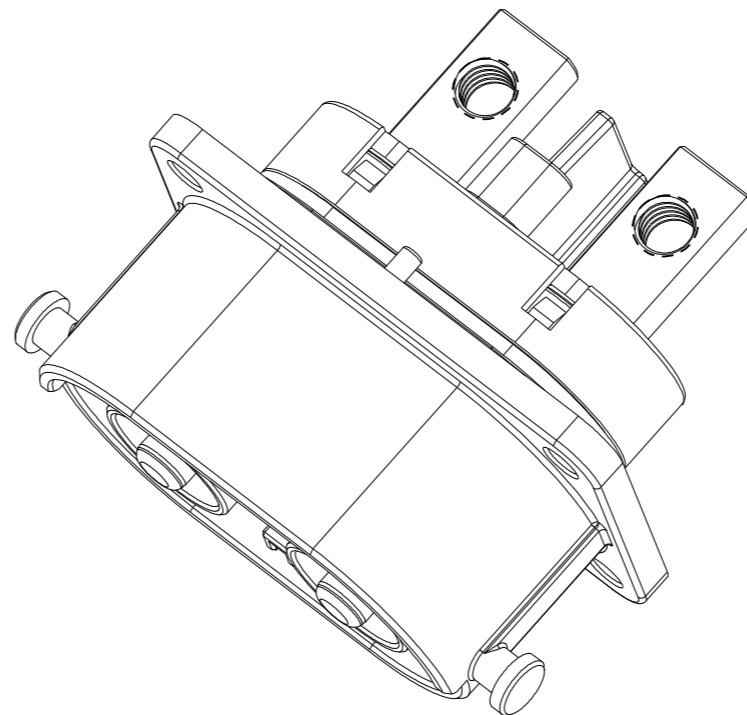
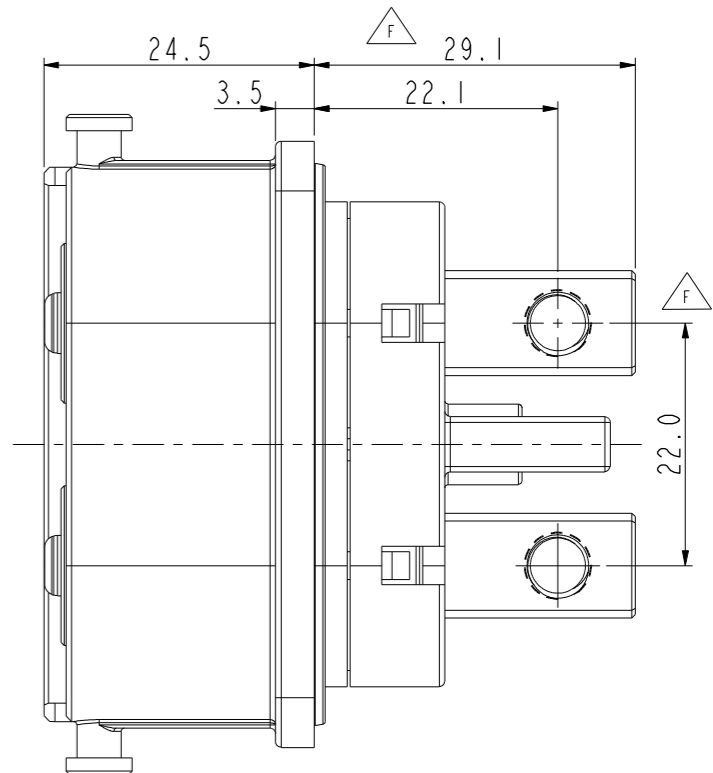
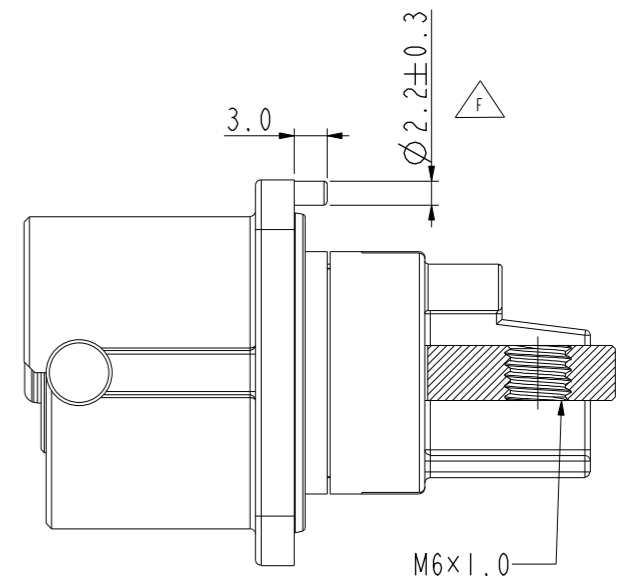
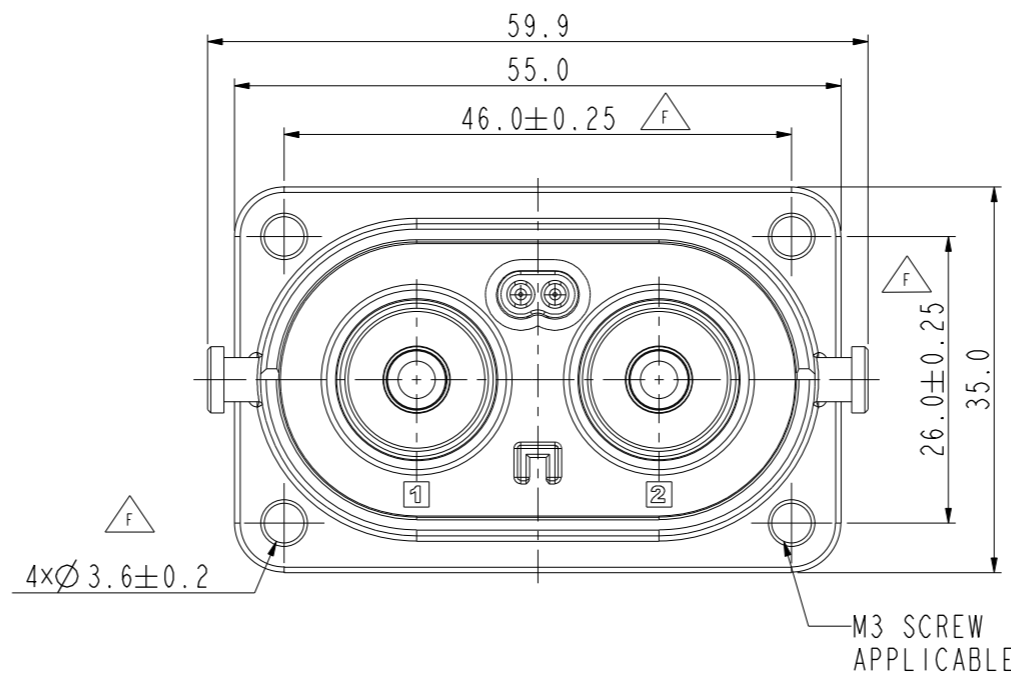
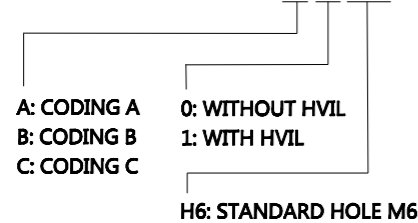


REV	ECN	DESCRIPTION	DATE	MODIFIED
D	C3005	ADD CODING C	2018.10.25	
E	R3398-N	Adjust the panel view to match the main view	2019.06.13	
F	R4010W	ADJUST THE DATA/ADD DUST CAP NO.	2019.12.24	

HOW TO ORDER

HVSL5 600 02 2X X XX



NOTES:

- 1.FLANGE RECOMMENDED LOCKING TORQUE IS 0.9N.m
- 2.THE RECOMMENDED TORQUE FOR FASTENING THE M6 COPPER BAR TERMINALS IS 5.3N.m(REFERENCE STANDARD:NF F61-017)
- 3.DUST CAP NO.:P03BR00057. PLEASE BUY SEPARATELY IF REQUIRED

✦ :CRITICAL CHARACTERISTICS/关键特性
◎ :IMPORTANT CHARACTERISTICS/重要特性

TECHNICAL DATA		
CURRENT RATE(25MM ² CABLE)	120A @ AMBIENT 70°C	✦
RATING VOLTAGE (OVERVOLTAGE CATEGORY II POLLUTION DEGREE 2)	1000V DC	✦
OPERATING TEMPERATURE	-40~125°C	
DIELECTRIC WITHSTANDING VOLTAGE	3000V AC(RMS)	✦
INSULATION RESISTANCE	100MΩ MIN. @25°C	✦
DURABILITY	50 CYCLES	◎
SHIELDING	YES	✦
WATERPROOF (MATED CONDITION)	IP67、IP6K9K	✦
PROTECTION LEVEL(UNMATED)	IP2XB	✦
AMBIENT TEMPERATURE	-40~70°C	
RoHS	YES	✦

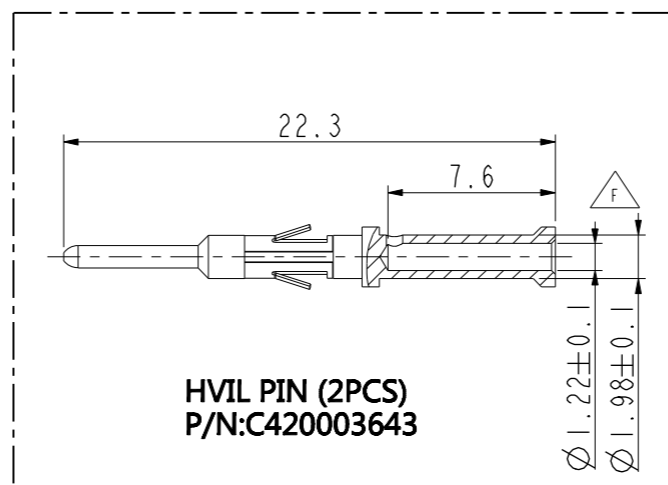
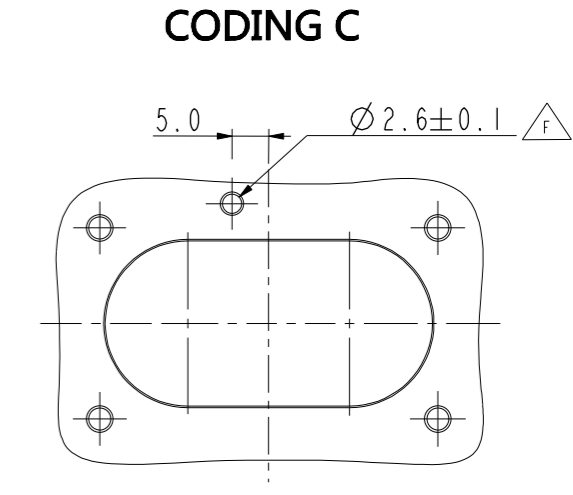
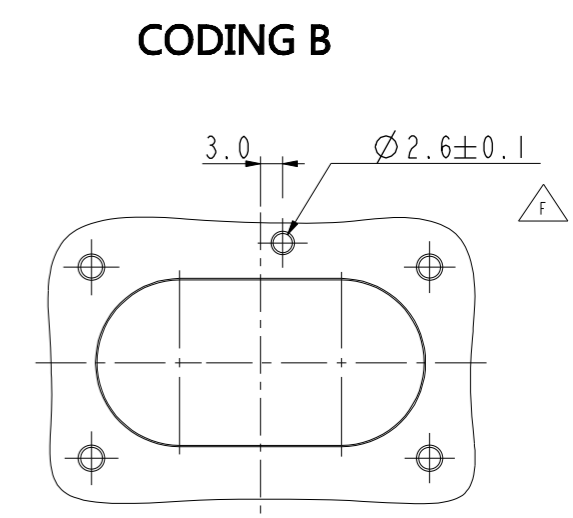
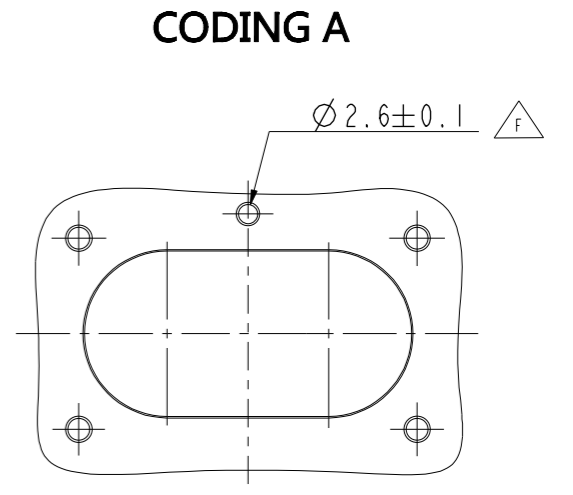
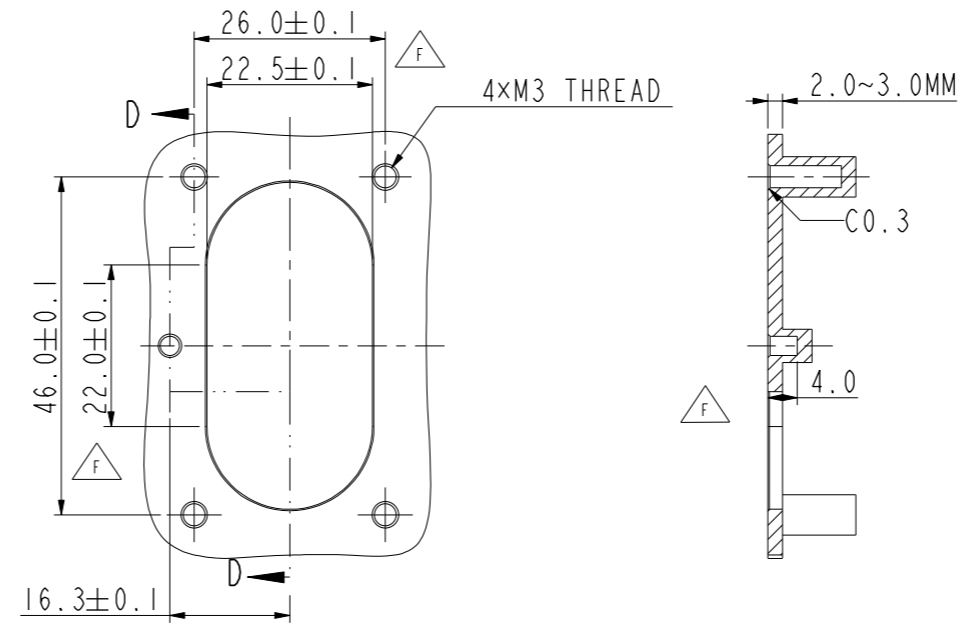
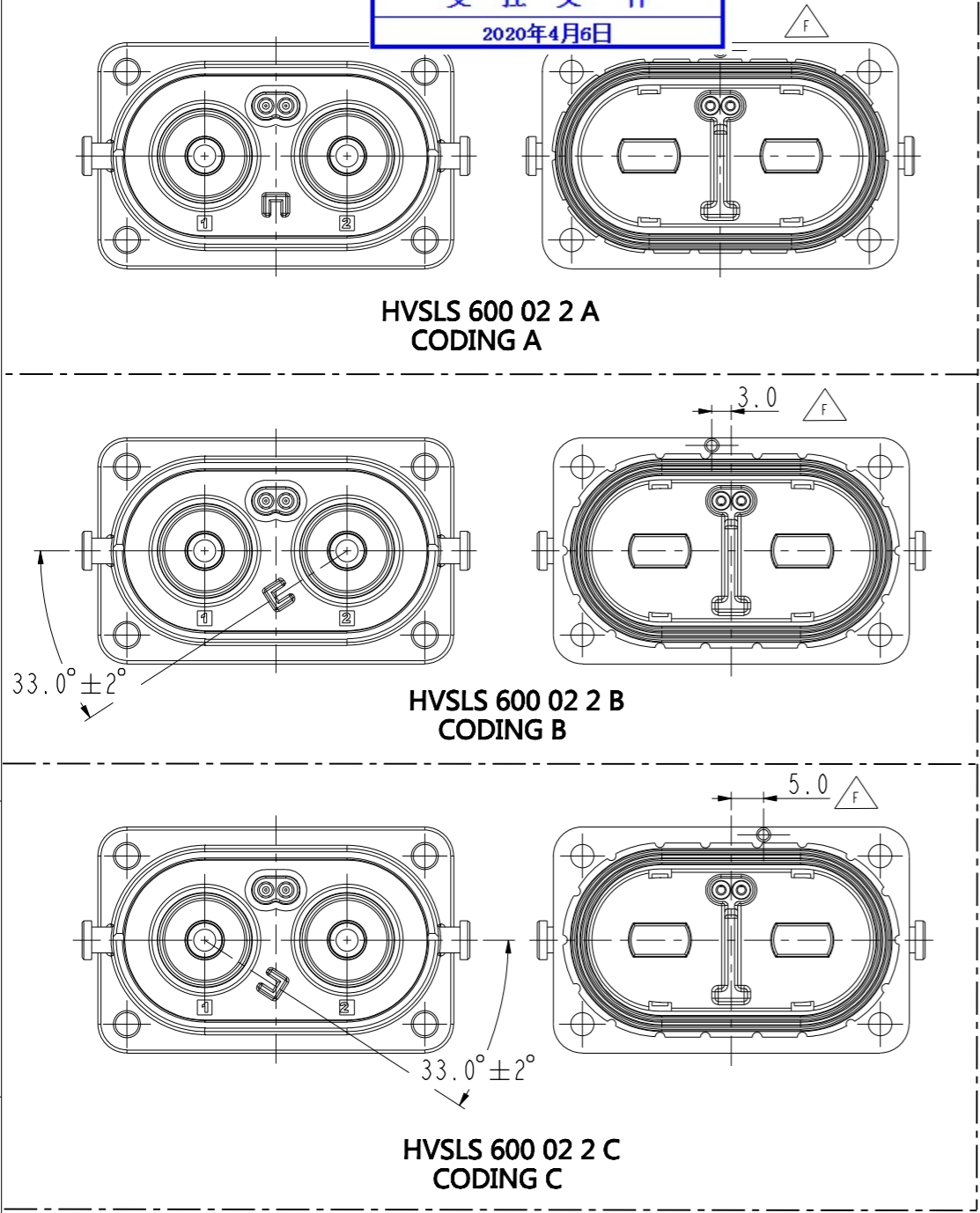
DIMENSIONS	TOLERANCES	PROJECTION
ANSI Y14.5M UNITS: MM Pro/E FILE	.X ±0.5 .XX ±0.05 ANGLES ±0.5°	
ORIGINAL	THIS DOCUMENT CONTAINS PROPRIETARY INFORMATION WHICH IS THE CONFIDENTIAL PROPERTY OF AMPHENOL PCD SHENZHEN	

Amphenol Pcd Shenzhen	
ENGR	2017.04.10
CHKD	
APPD	

TITLE		
HVSL5 600 02 2X X XX BOX MOUNTING RECEPTACLE ASSEMBLY		
SIZE	DWG NO.	REV
A3	C-HVSL5600022XXXX	F
CODE: 58982	SCALE: 3:2	SHEET 1 OF 2

C-HVSL5600022XXXX

C-HVSL5600022XXXX



SIZE A3	DWG NO. C-HVSL5600022XXXX	REV F
CODE: 58982	SCALE: 1:1	SHEET 2 OF 2

C-HVSL5600022XXXX

C-HVSL5600022XXXX