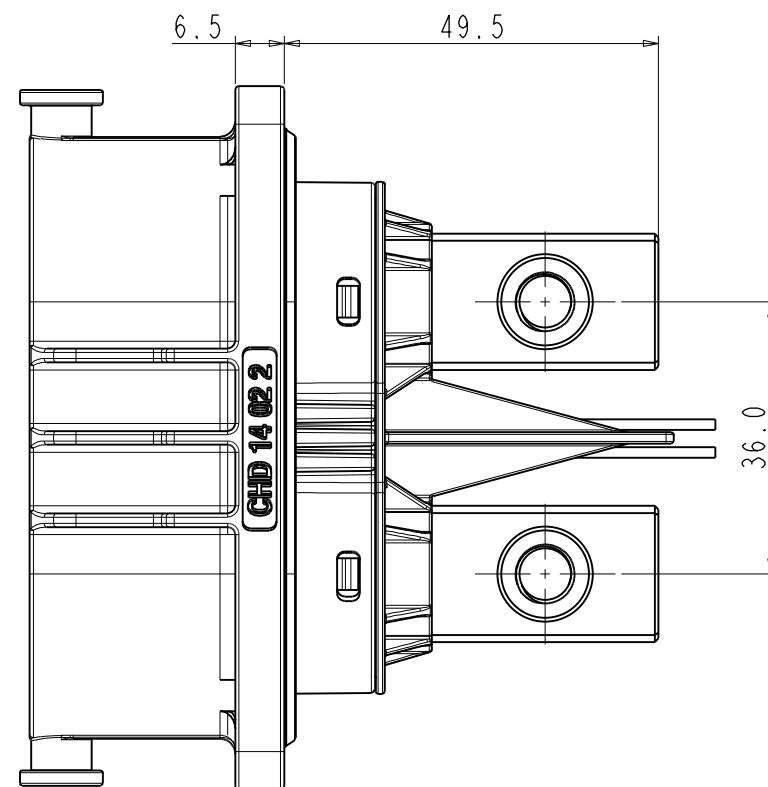
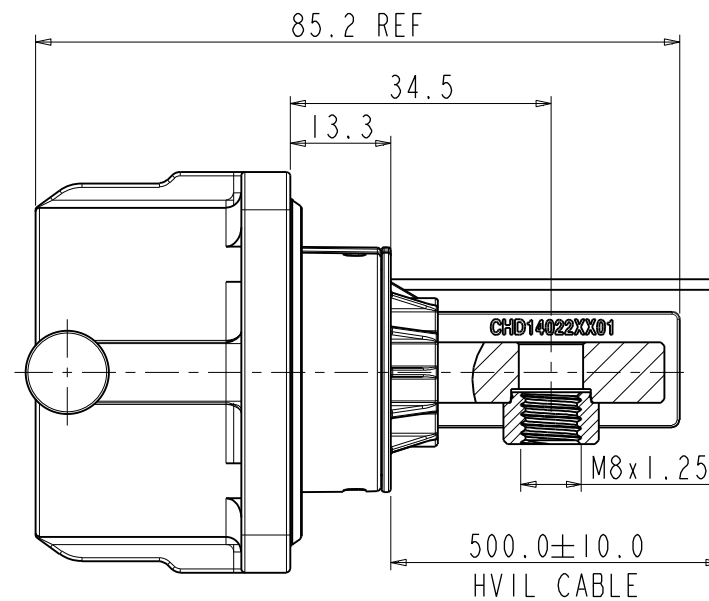
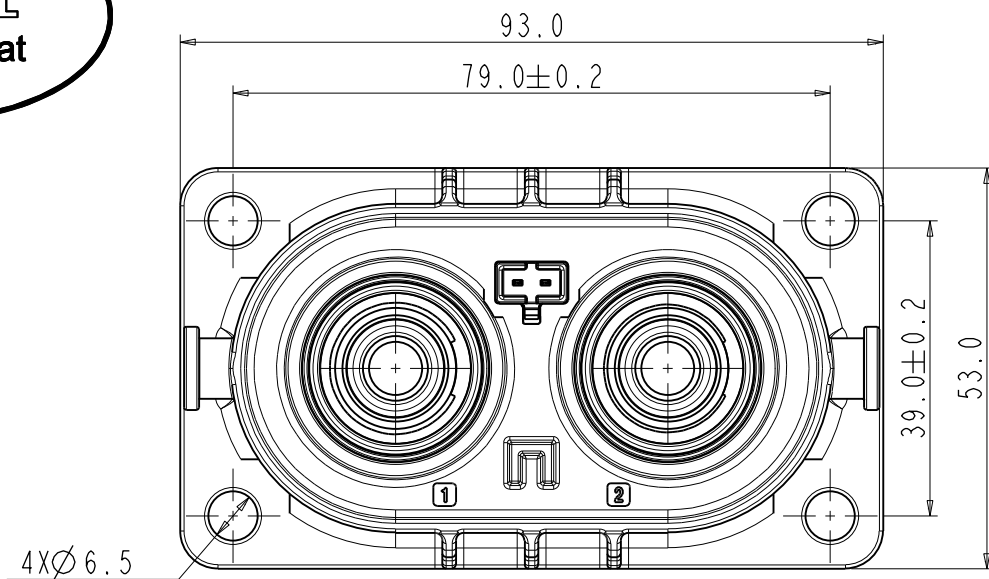


Amphenol PCD  
ORIGINAL  
PDF Format  
R&D



REV	ECN	DESCRIPTION	DATE	MODIFIED
1		PRE- RELEASE	Oct-18-2022	
2	R7619N	ADD SPECIFICATIONS	Nov-24-2023	
3	C8273N	CORRECT ERRORS FOR DRAWING	Jul-05-2024	

5. TECHNICAL DATA TABLE

TECHNICAL DATA		
CURRENT RATE (150MM <sup>2</sup> SHIELD CABLE)	500A @ AMBIENT 70°C	+
CURRENT RATE (120MM <sup>2</sup> SHIELD TINNED CABLE) <sup>3</sup>	450A @ AMBIENT 70°C	+
CURRENT RATE (120MM <sup>2</sup> SHIELD BARE COPPER CABLE) <sup>3</sup>	430A @ AMBIENT 70°C	+
CURRENT RATE (95MM <sup>2</sup> SHIELD TINNED CABLE) <sup>3</sup>	400A @ AMBIENT 70°C	+
CURRENT RATE (95MM <sup>2</sup> SHIELD BARE COPPER CABLE) <sup>3</sup>	350A @ AMBIENT 70°C	+
CURRENT RATE (70MM <sup>2</sup> SHIELD CABLE)	300A @ AMBIENT 70°C	+
RATING VOLTAGE (OVERVOLTAGE CATEGORY II POLLUTION DEGREE 2)	1500V DC	+
OPERATING TEMPERATURE	-40~125°C	
DIELECTRIC WITHSTANDING VOLTAGE	4000V AC(RMS)	+
INSULATION RESISTANCE	200MΩ MIN. @25	+
DURABILITY	50 CYCLES	⊙
SHIELDING	YES	
WATERPROOF (UNMATED CONDITION)	IP67	+
WATERPROOF (MATED CONDITION)	IP67, IP6K9K	+
PROTECTION LEVEL(UNMATED)	IP2XB	+
AMBIENT TEMPERATURE	-40~70°C	
RoHS & REACH	YES	+

NOTES:

- MATERIAL & FINISH:  
BODY: ALUMINUM ALLOY, NEUTRAL SALT SPRAY MEETS 500H.  
POWER CONTACT: COPPER ALLOY SILVER  
HVIL CONTACTS: COPPER ALLOY GOLD PLATED  
SEAL RING: SR
- THE FLANGE IS LOCKED WITH M6 BOLTS, AND THE LOCKING TORQUE IS 9.0N.M (REFERENCE STANDARD: QCT518-1999)
- THE COPPER BAR IS LOCKED WITH M8 BOLTS, AND THE LOCKING TORQUE IS 13.4N.M (REFERENCE STANDARD: NFF 61-017)

4. PART NUMBERING SCHEME:

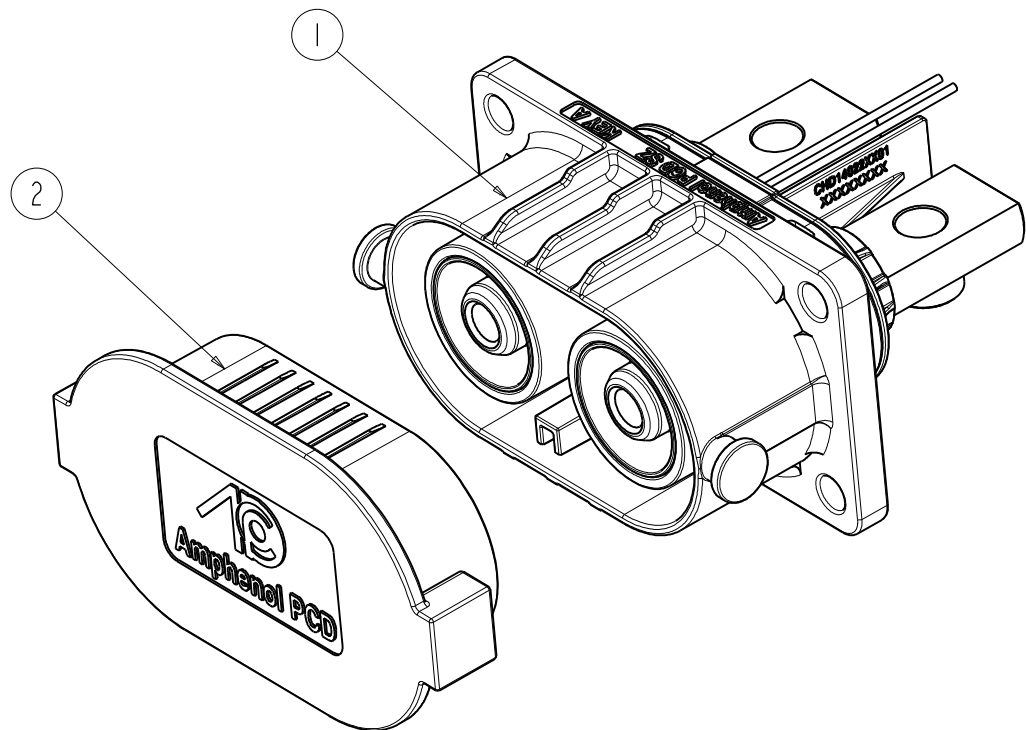
CHD 14 02 2 X X 01

- A: CODING A
- B: CODING B
- C: CODING C
- 0: WITHOUT HVIL
- 1: WITH HVIL
- COPPER BAR(M8X1.25)

+ : CRITICAL CHARACTERISTICS / 关键特性  
⊙ : IMPORTANT CHARACTERISTICS / 重要特性

安费诺精密连接器(深圳)有限公司  
Amphenol PCD Shenzhen  
受控文件  
2024年8月30日

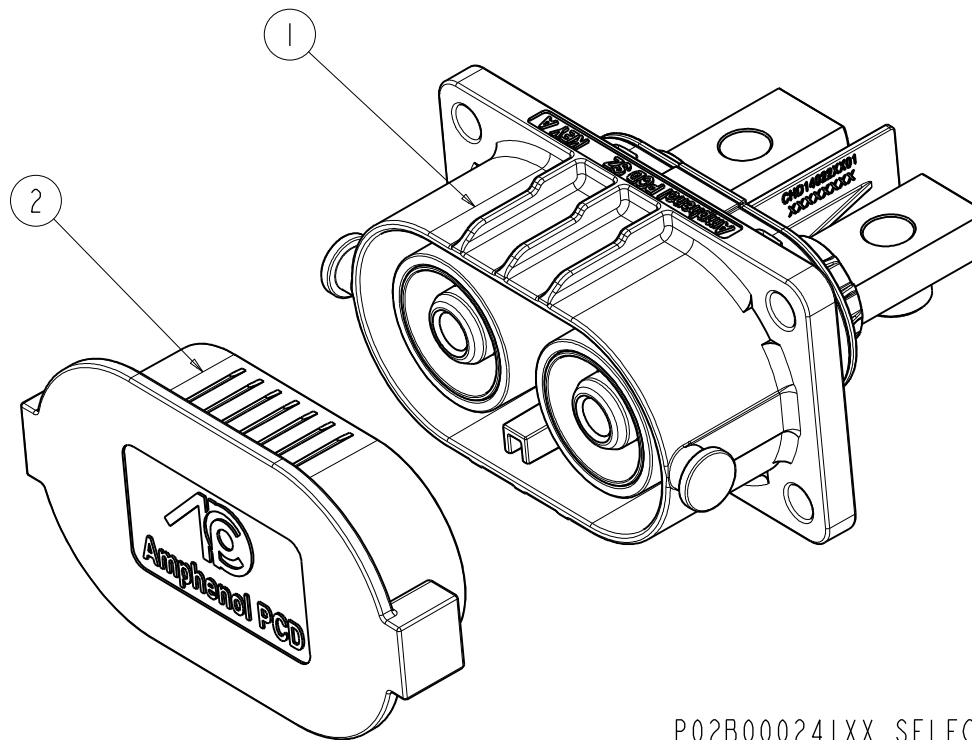
DIMENSIONS	TOLERANCES	PROJECTION	TITLE		
ANSI Y14.5M UNITS: MM Pro/E FILE	.X ±0.5 .XX ±0.05 ANGLES ±2°		CHD14 02 2 X X 01 RECEPTACLE ASSEMBLY		
ORIGINAL	THIS DOCUMENT CONTAINS PROPRIETARY INFORMATION WHICH IS THE CONFIDENTIAL PROPERTY OF Amphenol PCD Co. Ltd Amphenol PCD Co. Ltd RESERVES THE RIGHT TO CLARIFY THIS DRAWING				
			CHKD		
			APPD		
			SIZE	DWG NO.	REV
			A3	C-CHD14022XX01	3
			SCALE: 1:1		SHEET 1 OF 3



P02B000240XX SELECTION

MAIN BODY	KEY X
P02B00024001	KEY A
P02B00024002	KEY B
P02B00024003	KEY C

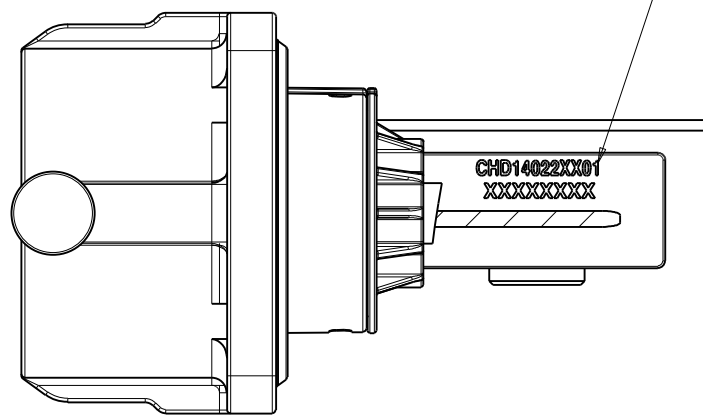
ASSEMBLY P/N	ITEM	COMPONENT P/N	DESCRIPTION	Q'TY
CHD14022X101	2	P01BP00702	PROTECTIVE CAP	1
	1	P02B000240XX	MAIN BODY(WITH HVIL)	1



P02B000241XX SELECTION

MAIN BODY	KEY X
P02B00024101	KEY A
P02B00024102	KEY B
P02B00024103	KEY C

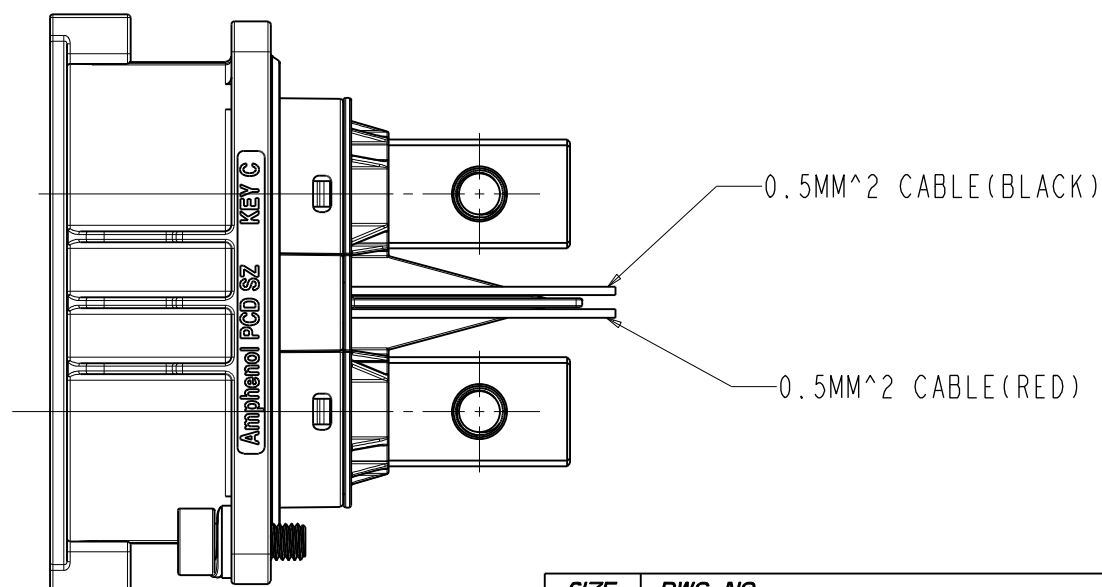
ASSEMBLY P/N	ITEM	COMPONENT P/N	DESCRIPTION	Q'TY
CHD14022X001	2	P01BP00702	PROTECTIVE CAP	1
	1	P02B000241XX	MAIN BODY(WITHOUT HVIL)	1



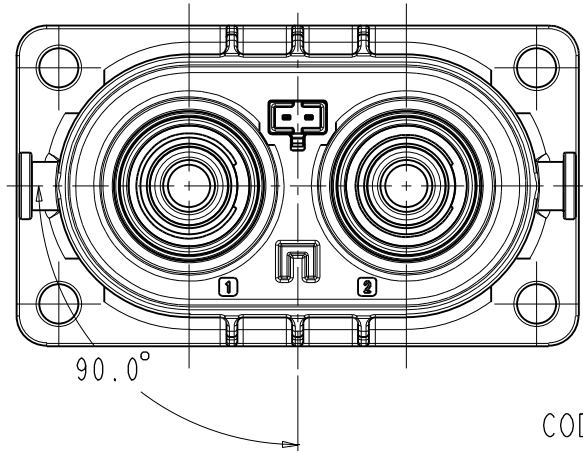
THE FIRST ROW IS THE PRODUCT PART NUMBER(PRINT THE FULL CODE)

THE SECOND ROW OF WORK ORDER NUMBER+BATCH

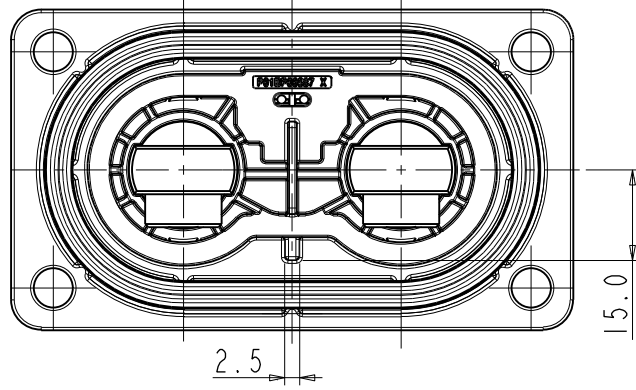
安费诺精密连接器(深圳)有限公司  
Amphenol PCD Shenzhen  
受控文件  
2024年8月30日



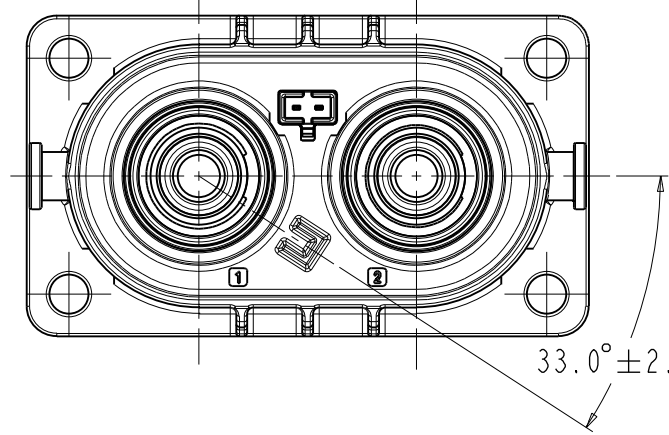
SIZE	DWG NO.	REV
A3	C-CHD14022XX01	3
SCALE: 1:1		SHEET 2 OF 3



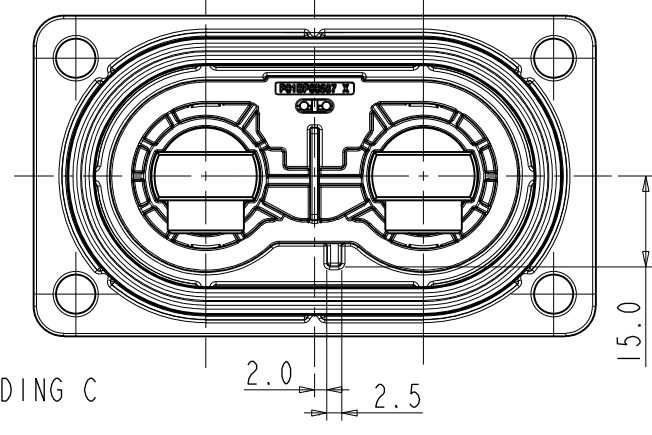
CODING A



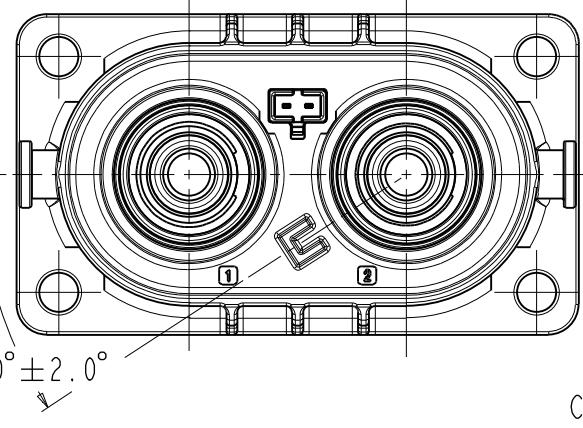
15.0



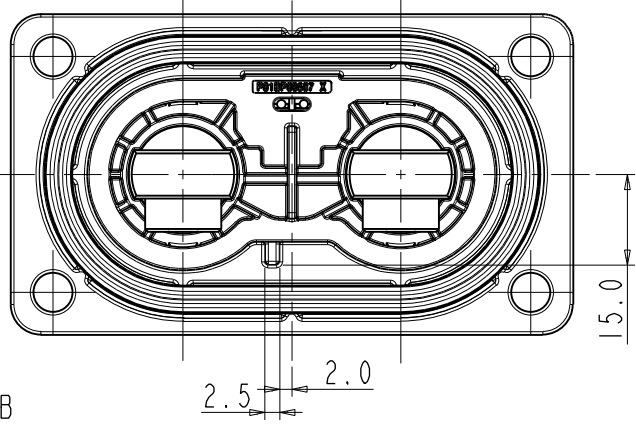
CODING C



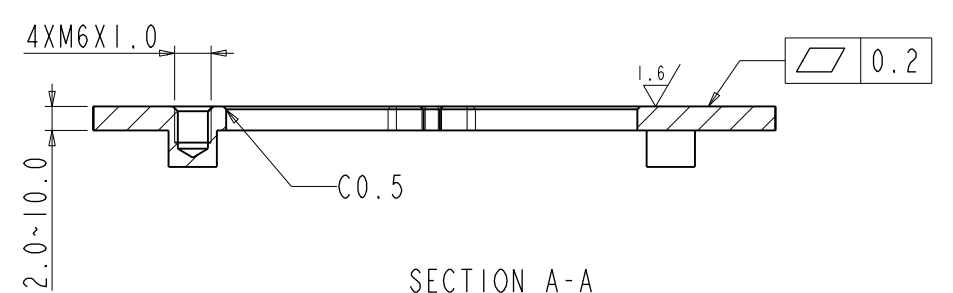
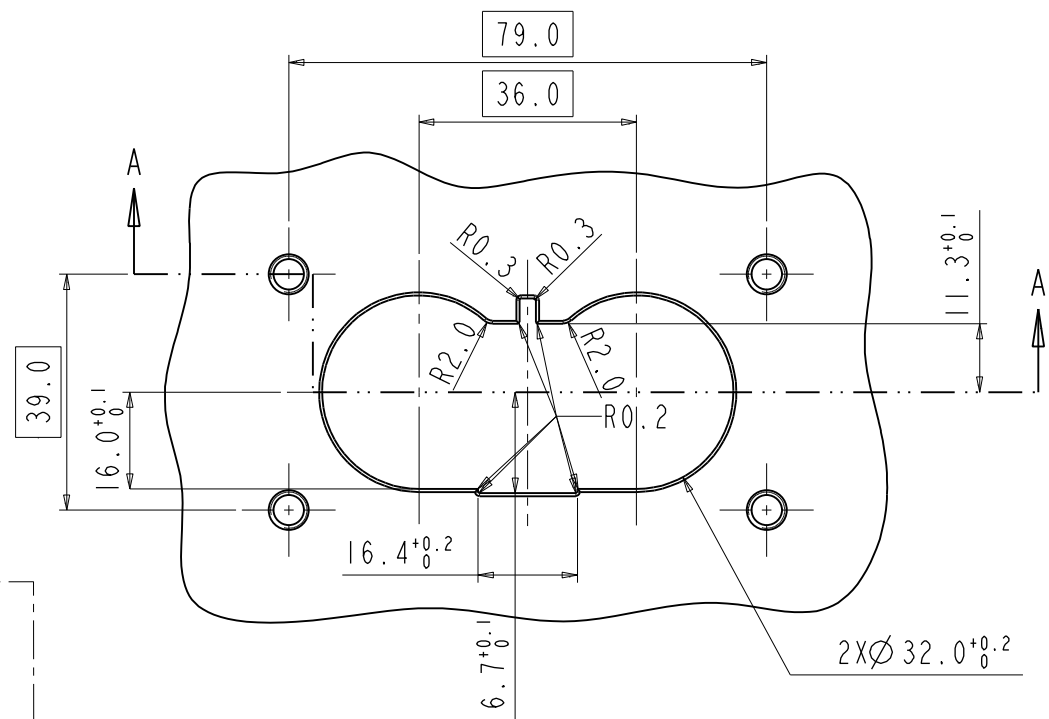
15.0



CODING B



15.0



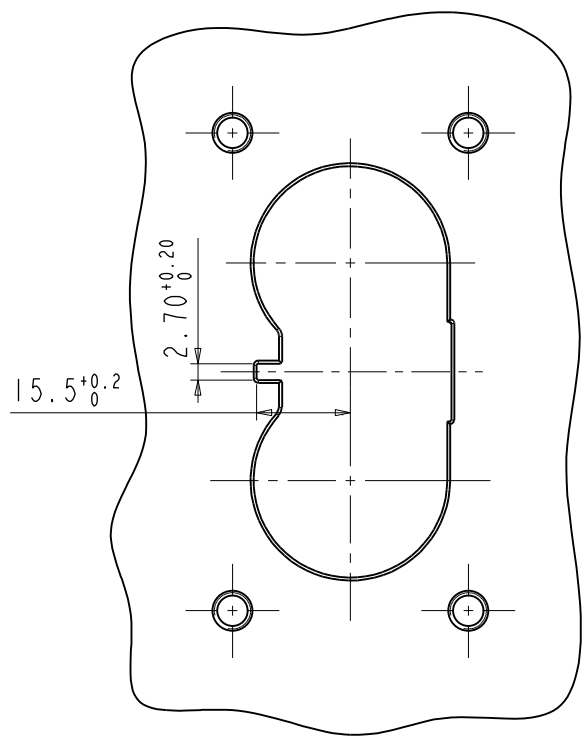
SECTION A-A

PANEL DRILLING

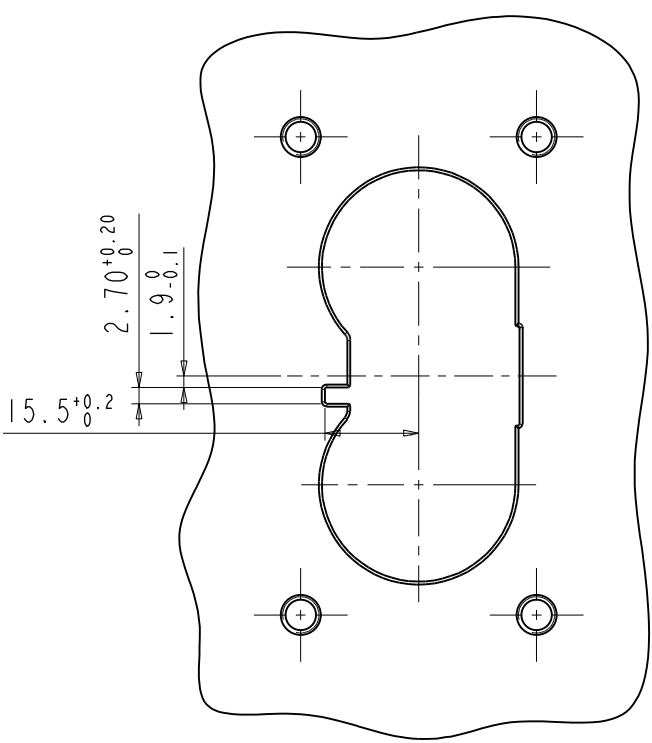
安费诺精密连接器(深圳)有限公司  
Amphenol PCD Shenzhen  
受控文件  
2024年8月30日

C-CHD14022XX01

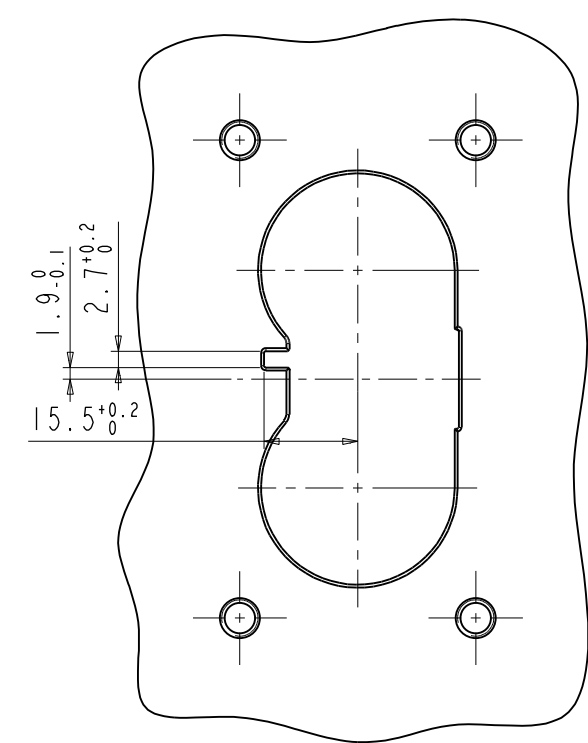
C-CHD14022XX01



CODING A



CODING B



CODING C

SIZE	DWG NO.	REV
A3	C-CHD14022XX01	3
SCALE: 1:1		SHEET 3 OF 3