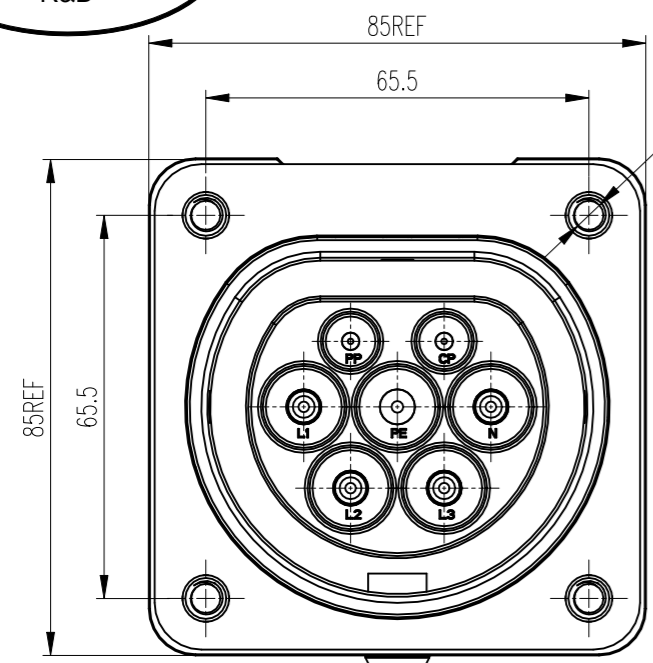
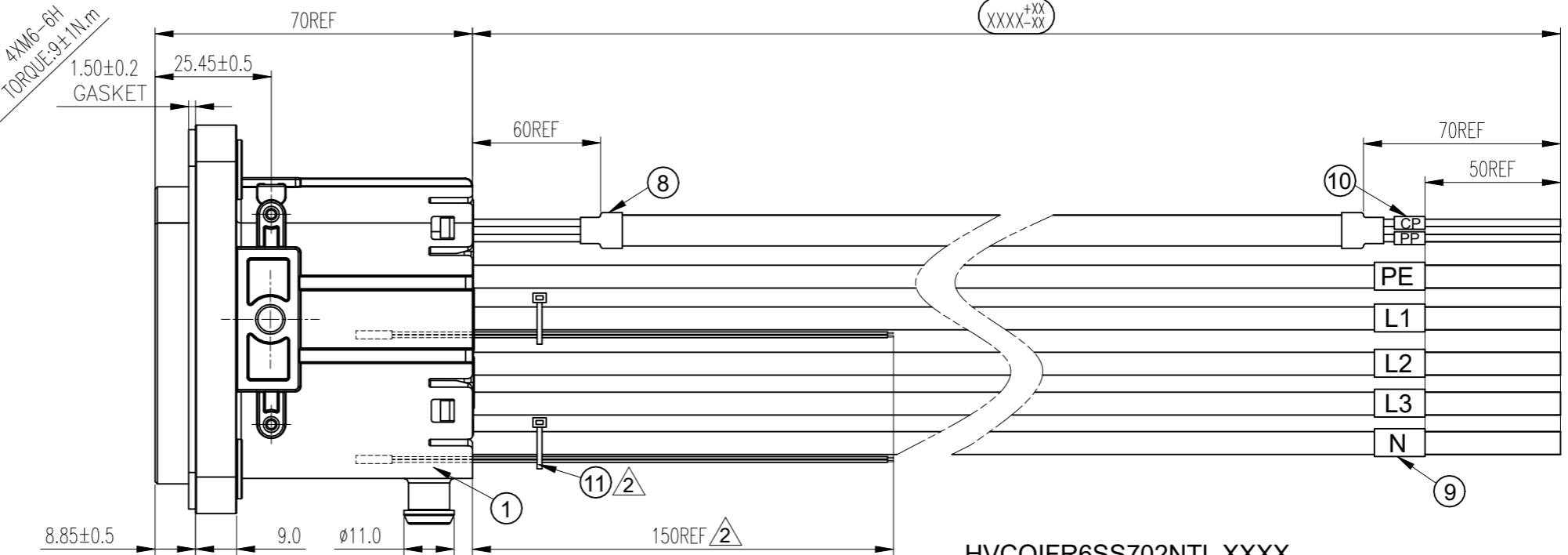


REV	ECN	DESCRIPTION	DATE	MODIFIED
1		RELEASE	Jun-05-2023	
2	R7657N	ADD CABLE TIES	Jan-25-2024	

ORIGINAL
PDF Format
R&D

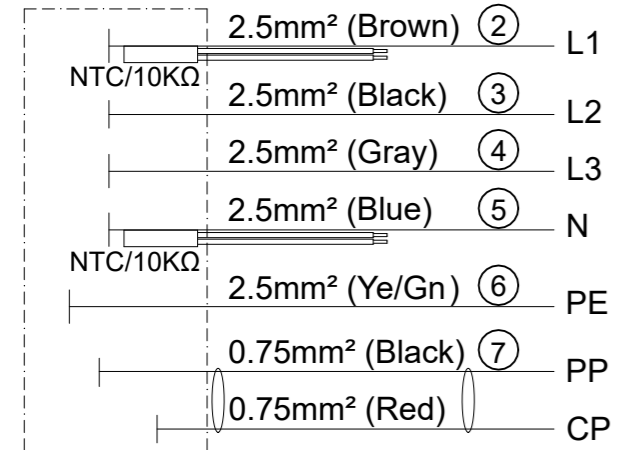


IEC VEHICLE INLET

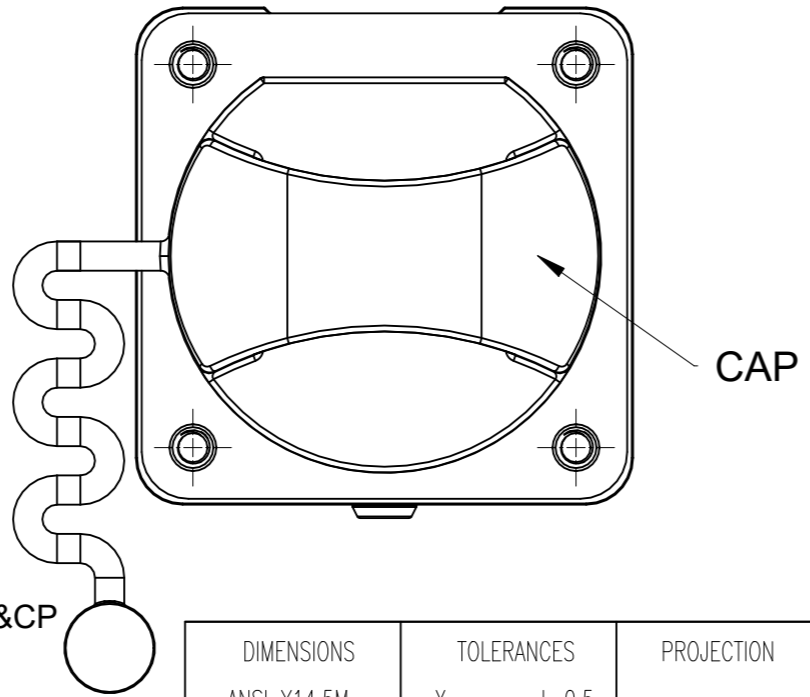


HVCOIFR6SS702NTL XXXX

CABLE CONNECTING METHOD



LENGTH	TOLERANCE
0~1000mm	+25 -10
1001~5000mm	+40 -10
>5000mm	+50 -20



- *Notes:
- Cable assembly data:
 - Rated Voltage: 480V AC (L1&L2&L3&N&PE); 30V DC (CP&PP);
 - Rated Current: 20A (L1&L2&L3&N); 2A (CP&PP);
 - IP-Class: IP44 (mated), IP55 (with CAP)
 - Insulation Resistance: 100MΩ Min/500V DC
 - Withstand Voltage: 2000V r.m.s / L1&L2&L3&N&PE; 500V r.m.s / PP&CP
 - Durability: >10000 cycles
 - RoHS Compliance
 - Ambient Temperature: -30°C ~ +50°C
 - Reference: IEC 62196-2, CE, UKCA marking
 - Connector Reference: C-HVCOIFR6SS702NTL0000
 - The cable should be fixed at 100mm max from the rear of connector
 - Add cable ties to fix sensor wires, to avoid pulling out
 - Cable Minimum Bending Radius: ≥5OD

ITEM	P/N	DESCRIPTION	QTY	UNIT
11	C210003609	CABLE TIE BLACK	2	EA
10	C210006837	H.S.T: Ø3.2 WHITE LABEL	0.04	m
9	P05B000006	H.S.T: Ø6.0 WHITE LABEL	0.10	m
8	C210006440	DOUBLE-WALL H.S.T: Ø8.0 BLACK	0.06	m
7	P01BC00029	2C*0.75mm² SHIELDING ORANGE OD=6.7±0.2 RED/BLACK	AR	m
6	P01BC00229	2.5mm² UNSHIELDING YELLOW/GREEN, XLPE, OD3.45±0.15	AR	m
5	P01BC00207	2.5mm² TINNED UNSHIELDING BLUE, XLPE, OD3.45±0.15	AR	m
4	P01BC00208	2.5mm² TINNED UNSHIELDING GRAY, XLPE, OD3.45±0.15	AR	m
3	P01BC00209	2.5mm² TINNED UNSHIELDING BLACK, XLPE, OD3.45±0.15	AR	m
2	P01BC00206	2.5mm² TINNED UNSHIELDING BROWN, XLPE, OD3.45±0.15	AR	m
1	HVCOIFR6SS702NTL	IEC INLET: HVCOIFR6SS702NTL0000 AC 20A/3P, NTC/10KΩ	1	EA

DIMENSIONS	TOLERANCES	PROJECTION	TITLE		
ANSI Y14.5M UNITS: MM CAD FILE	.X ± 0.5 .XX ± 0.05 ANGLES ± 2.0°		Amphenol PCD Shenzhen		
ORIGINAL	THIS DOCUMENT CONTAINS PROPRIETARY INFORMATION WHICH IS THE CONFIDENTIAL PROPERTY OF Amphenol PCD Shenzhen Co. Ltd RESERVES THE RIGHT TO CLARIFY THIS DRAWING	ENGR	IEC Vehicle Inlet 480V/20A Cable Assembly		
		CHKD APPD	SIZE A3	DWG NO. C-HVCOIFR6SS702NTLXXXX	REV 2
			SCALE 1:1	SHEET 1 OF 1	