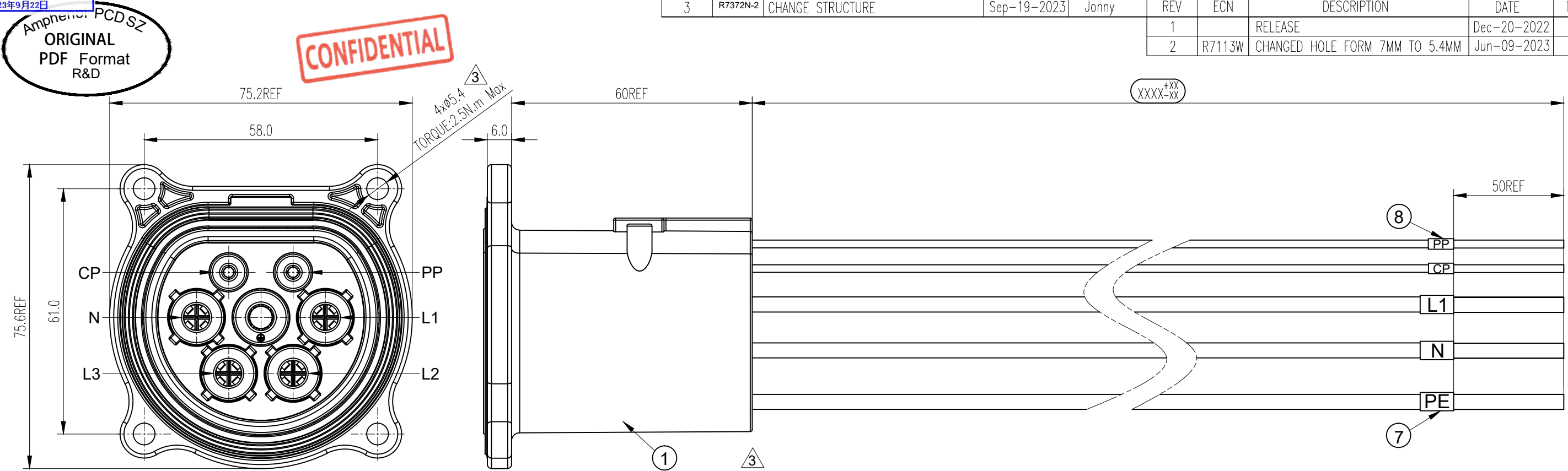


3	R7372N-2	CHANGE STRUCTURE	Sep-19-2023	Jonny	REV	ECN	DESCRIPTION	DATE	MODIFIED
					1		RELEASE	Dec-20-2022	
					2	R7113W	CHANGED HOLE FORM 7MM TO 5.4MM	Jun-09-2023	



C-HVCOSFS506LXXXX

C-HVCOSFS506LXXXX

IEC SOCKET

CABLE CONNECT METHOD

6mm ² (Brown) ②	L1
L2/Blank	
L3/Blank	
6mm ² (Blue) ③	N
6mm ² (Ye/Gn) ④	PE
0.5mm ² (Red) ⑤	PP
0.5mm ² (Black) ⑥	CP

HVCOSFS506L XXXX

LENGTH	TOLERANCE
0~1000mm	+25 -10
1001~5000mm	+40 -10
>5000mm	+50 -20

- *Notes:
- Cable assembly data:
 - Rated Voltage: 250V AC(L1&N&PE); 30V DC(CP&PP);
 - Rated Current: 32A (L1&N); 2A (CP&PP);
 - IP-Class: IP2X; IP55(Mated)
 - Insulation Resistance: 100MΩ Min/500V DC
 - Withstand Voltage: 2000V r.m.s / L1&N&PE; 500V r.m.s / PP&CP
 - Durability: >10000 Cycles
 - RoHS Compliance
 - Ambient Temperature: -30°C ~ +50°C
 - Reference standard: IEC 62196-2 ; CE marking
 - Connector Reference: C-P02B000235
 - The cable should be fixed at 100mm max from the rear of connector
 - Cable Minimum Bending Radius: ≥5OD

ITEM	P/N	DESCRIPTION	QTY	UNIT
⑧	C210006837	H.S.T: Ø3.2 WHITE NOT MARKING	0.05	m
⑦	P05B000006	H.S.T: Ø6.0 WHITE NOT MARKING	0.10	m
⑥	C210030045	0.5mm ² UNSHIELDING BLACK OD=1.6±0.1	AR	m
⑤	C210030046	0.5mm ² UNSHIELDING RED OD=1.6±0.1	AR	m
④	C210030042	6mm ² UNSHIELDING YELLOW/GREEN, XLPE OD=5.1±0.2	AR	m
③	P01BC00200	6mm ² TINNED UNSHIELDING BLUE, XLPE OD=5.1±0.2	AR	m
②	P01BC00199	6mm ² TINNED UNSHIELDING BROWN, XLPE OD=5.1±0.2	AR	m
①	P02B000235	IEC SOCKET-OUTLET OF SHUTTER: P02B000235 BLACK	1	EA

DIMENSIONS	TOLERANCES	PROJECTION	Amphenol PCD Shenzhen		TITLE	
ANSI Y14.5M	.X ± 0.5		ENGR		IEC SOCKET OUTLET OF SHUTTER	
UNITS: MM	.XX ± 0.05		Jun-09-2023		32A 1P CABLE ASSEMBLY	
CAD FILE	ANGLES ± 2.0°		CHKD		SIZE	REV
ORIGINAL	THIS DOCUMENT CONTAINS PROPRIETARY INFORMATION WHICH IS THE CONFIDENTIAL PROPERTY OF Amphenol PCD Shenzhen Co. Ltd Amphenol PCD Shenzhen Co. Ltd RESERVES THE RIGHT TO CLARIFY THIS DRAWING		APPD		A3	3
			SCALE		SHEET	
			1:1		1 OF 1	