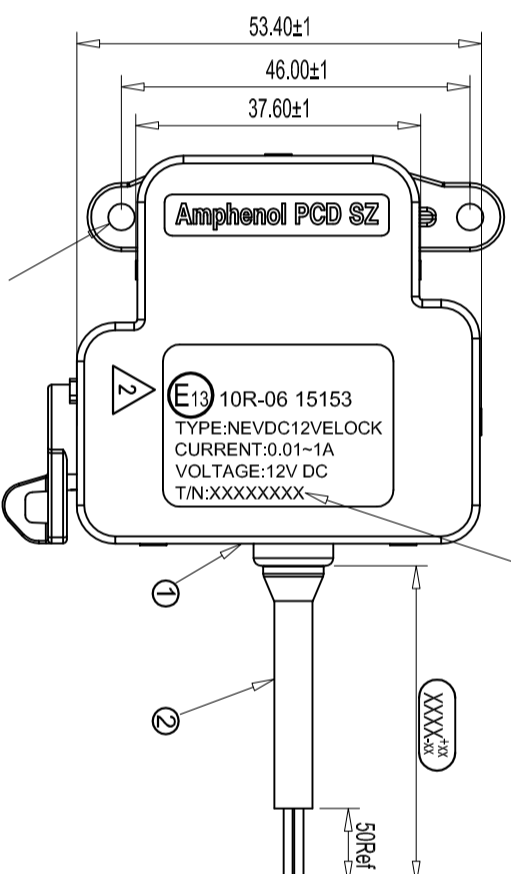
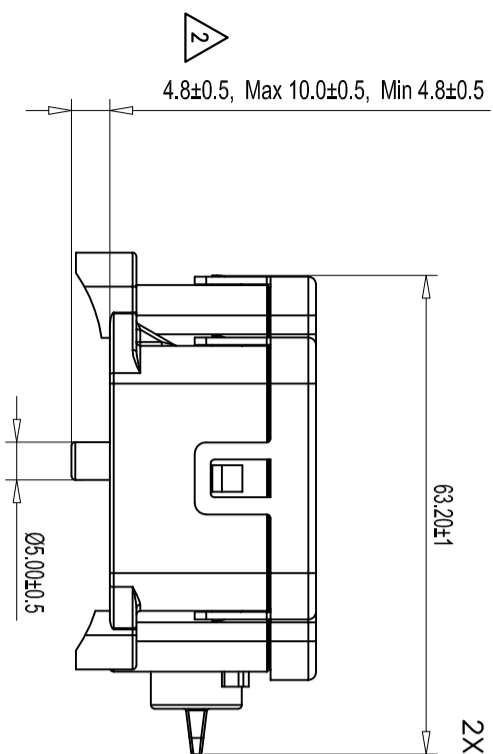
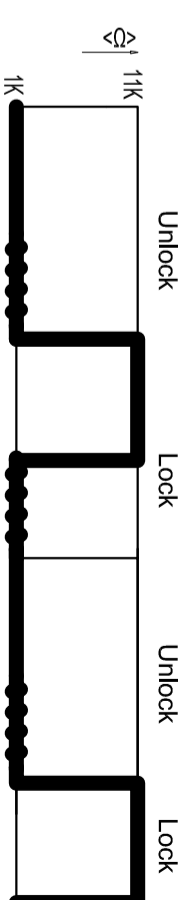
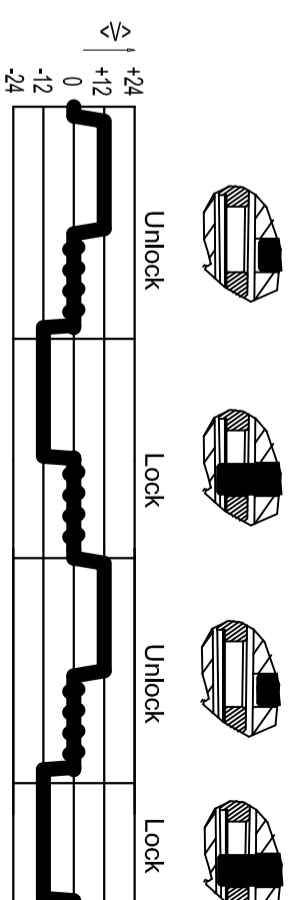


Bulk packing
2XST2.9X10



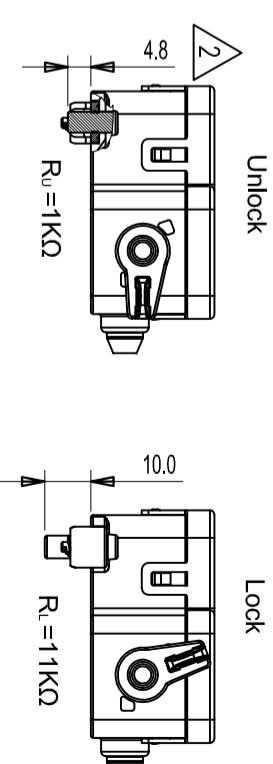
Recommended mounting torque:0.5N.M

| REV | ECN | DESCRIPTION | DATE | MODIFIED |
|-----|--------|---|------------|----------|
| 1 | | FIRST RELEASE | 2019.06.10 | |
| 2 | R5583W | 1.ADJUST THE LATCH LENGTH FOR UNLOCK STATUS 2.CHANGE AMBIENT TEMPERATURE (IN OPERATION) 3.UPDATE E13 LOGO | 2022.04.03 | |



Suggested Work time: > 3000ms
Max time:N/A
Min time:400ms

Suggested adjustment time:600ms
Max time:1000ms
Min time:450ms



C-NEVDC12VELOCKLxxxx

C-NEVDC12VELOCKLxxxx

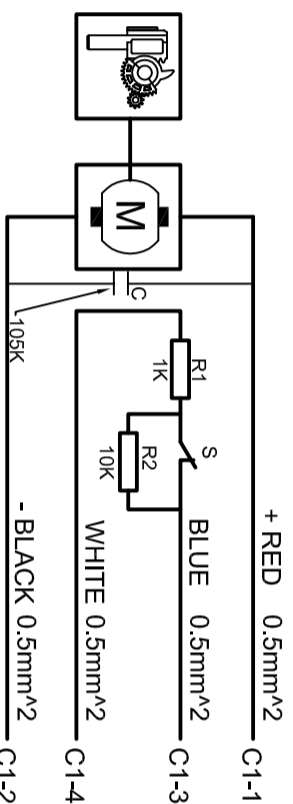
Contact switch is normally closed

Unlock: 1KΩ

Lock: 11 KΩ

- 1.Voltage supply at motor : 12V
- 2.Possible Voltage supply at motor : 9V~12V
- 3.Typical motor current for locking : 200mA
- 4.Maximal motor current for locking : 1000mA
- 5.Maximal voltage for locking detection: 20V
- 6.Maximal dwell period with blocking current: 1000ms
- 7.Suggested adjustment time : 600ms
- 8.Durability (In load cycles) : >40000
- 9.Ambient temperature (In operation) : -40°C~+85°C
- 10.Ambient temperature (storage) : -40°C~+85°C
- 11.IP-Class : IP65
- 12.RoHS Compliance
- 13.NEVDC12VELOCKLxxxx

Emergency unlocking of the 12V locking actuator
Schematic diagram



| TYPE | RED | BLACK | WHITE | BLUE |
|-----------|-----|-------|-------|-----------------|
| UNLOCKING | + | - | - | SIGNAL(Ru=1KΩ) |
| LOCKING | - | + | + | SIGNAL(Rl=11KΩ) |

| ITEM | NAME | DESCRIPTION | QTY | UNIT |
|------|-----------------|---|-----|------|
| ② | CABLE | 4*0.5MM² UNSHIELDING BLACK OD=5.0±0.2MM | AR | M |
| ① | ELECTRONIC LOCK | NEVDC12VELOCKL0000 | 1 | EA |

Amphenol PCD Shenzhen

DC 12V ELCOK
CABLE ASSEMBLY

| LENGTH | TOLERANCE |
|-------------|------------|
| 0~1000MM | +25 -10 |
| 1001~5000MM | +40 -10 |
| >5000MM | +50 -20 |

| DIMENSIONS | TOLERANCES | PROJECTION |
|--------------------------------------|-----------------------------------|------------|
| ANSI Y14.5M UNITS: MM CAD FILE | X ±0.5 .XX ±0.05 ANGLES ±2° | |

ORIGINAL
THIS DOCUMENT CONTAINS
PROPRIETARY INFORMATION WHICH
IS THE CONFIDENTIAL PROPERTY
OF AMPHENOL PCD SHENZHEN

CHKD
ENGR
APPD

SIZE A3
DWG NO. C-NEVDC12VELOCKLXXXX
SCALE 1:1
SHEET 1 OF 1
REV 2