



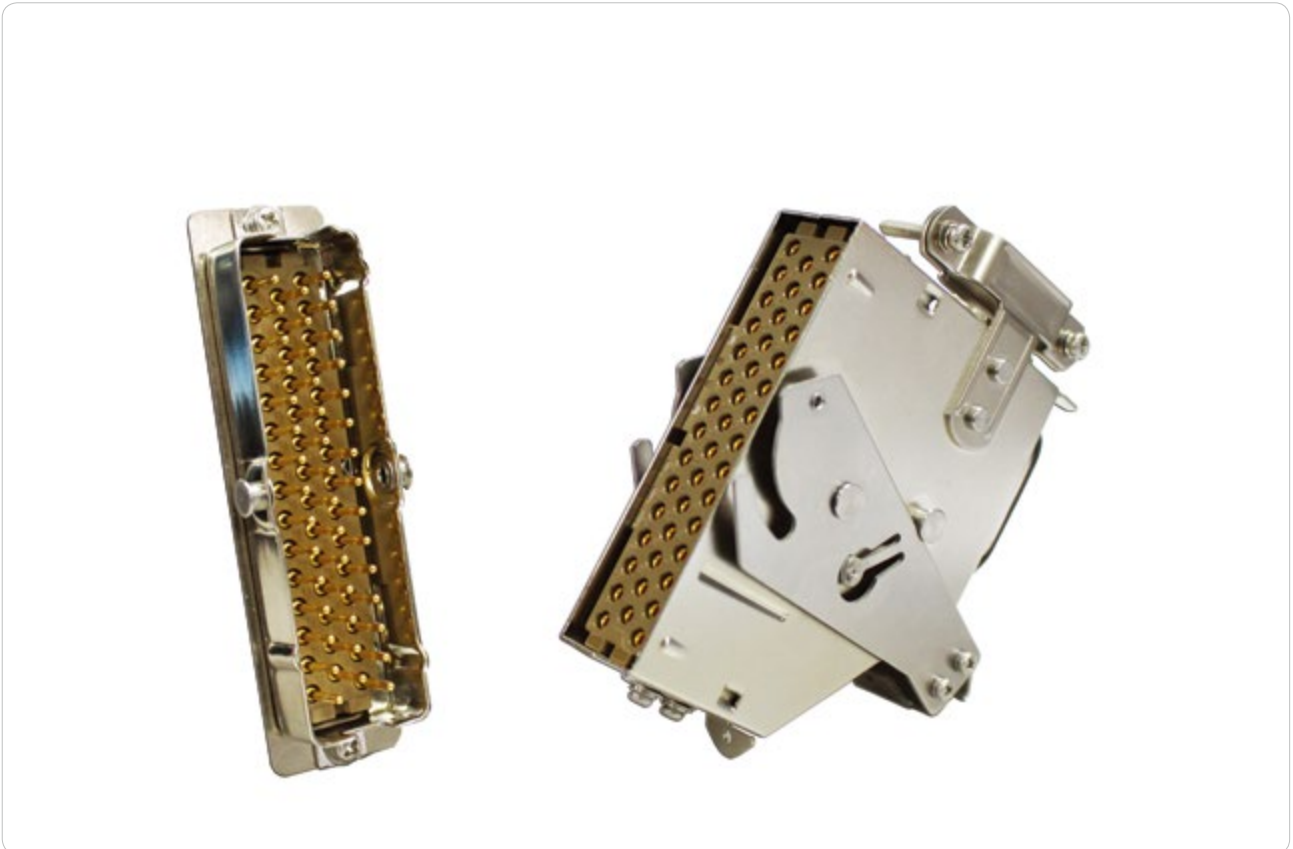
# ASTP



## CONTENTS

PRODUCT INTRODUCTION.....	3
CONNECTOR STRUCTURE.....	4
TECHNICAL CHARACTERISTICS.....	5
INSERT ARRANGEMENTS.....	6
HOW TO ORDER.....	7
DIMENSIONS.....	8
ALTERNATE KEYING POSITIONS.....	10
ACCESSORIES.....	12

## PRODUCT INTRODUCTION

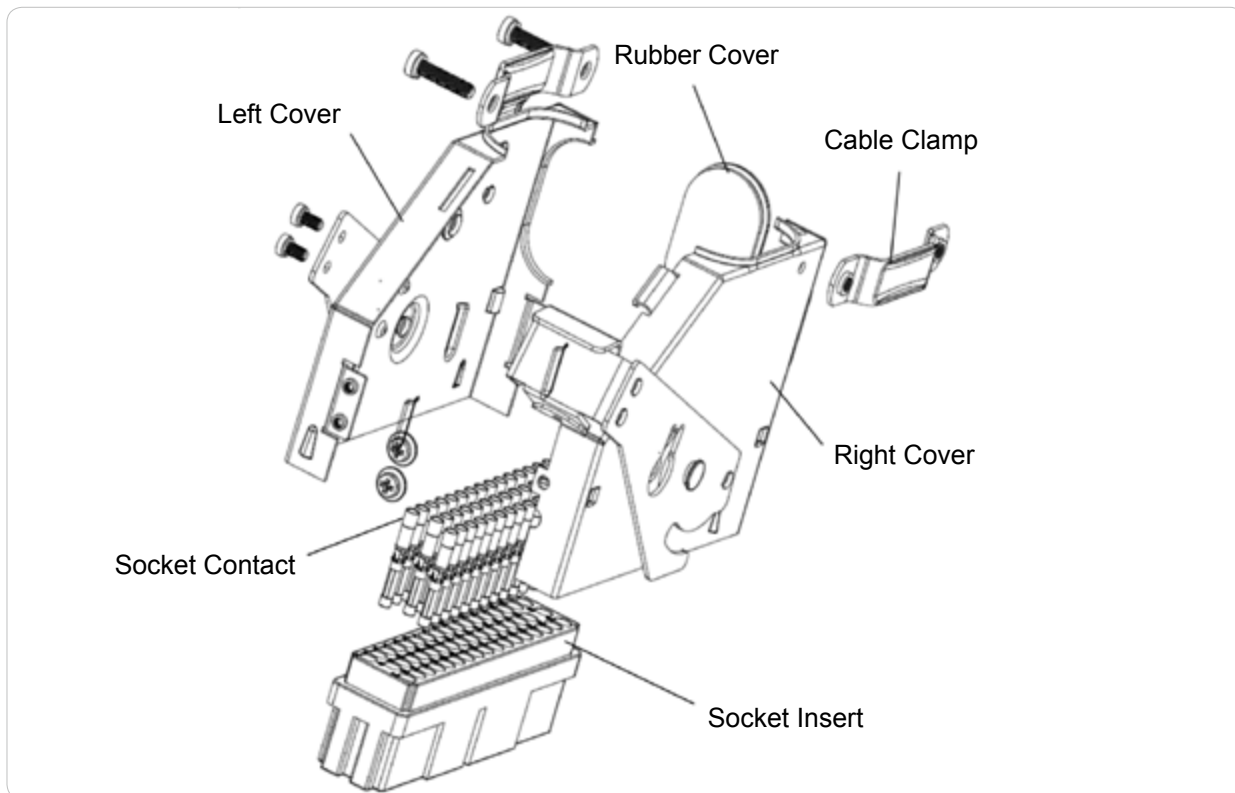


ASTP is a rectangular connector with a lever mechanism. Its metal outer shell provides a strong resistance against vibrations & shocks. ASTP can be widely used for railroad-related vehicles, communication equipment and industrial equipment.

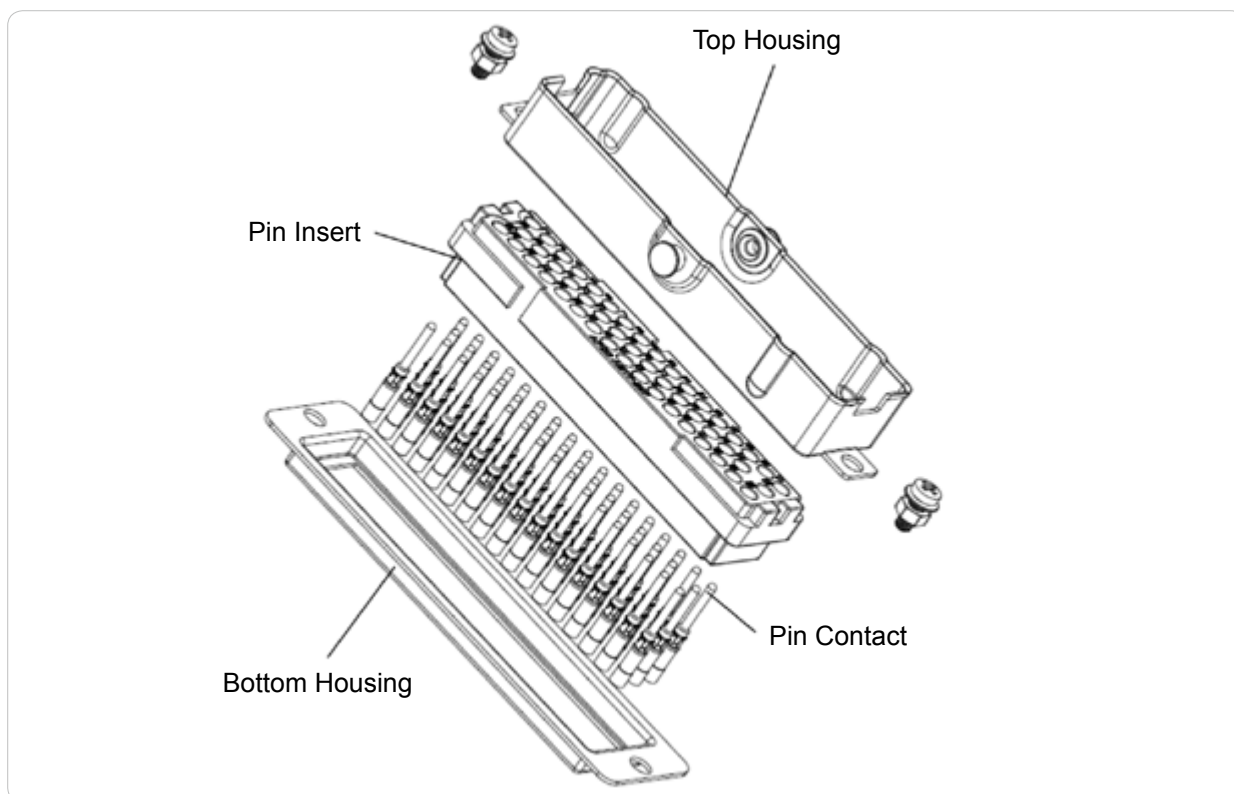
Two kinds of contact: crimp type contacts and through-hole type contacts (pins only for receptacle side) for board connection.

## CONNECTOR STRUCTURE

### RECEPTACLE



### PLUG



## TECHNICAL CHARACTERISTICS



### KEY FEATURES

Conforming with the French Railway standard NFF 61030

High density of alternate keying positions

EMI shielding

Crimping and soldering type are both available

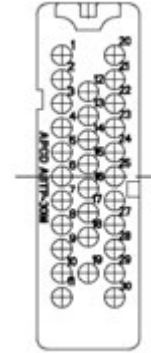
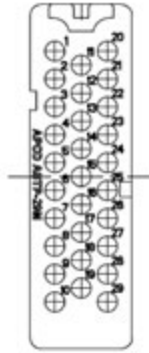
MECHANICAL	
Durability	≥ 750 mating cycles
Vibration & shock	IEC 61373-1999 (GB/T 21563-2008)
Contact retention force	#16: 70N
ELECTRICAL	
Rated current	#16: 9A max
Rated voltage	Conforming with IEC 60077-1:1999
Contact resistance	#16: 2.5mΩ max
Insulator resistance	≥ 5000MΩ
Temperature rise	≤ 60°C
ENVIRONMENTAL	
Temperature range	-55°C to 125°C
Humidity	90% to 95% (40 ± 2°C)
Inflammability	UL94-V0
Salt spray	48h (nickel plating)
MATERIAL	
Shell	Nickel plating
Inserts	Thermoplastic
Sealing gasket	Silicon rubber
Contact	Copper alloy, gold plating

## INSERT ARRANGEMENTS

Front face of pin insert or rear of socket insert illustrated

CONTACT 

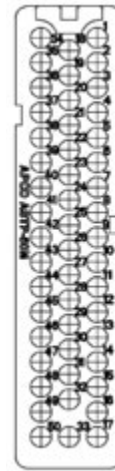
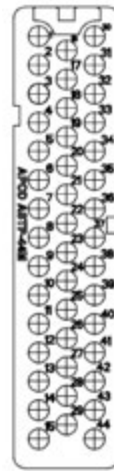
16



Insert arrangement  
Rated voltage  
Rated current  
Contact number  
Contact size  
Withstanding voltage

29 (NA\*)  
110 VDC  
9A  
29  
#16  
2000V AC

30 (NA\*)  
110 VDC  
9A  
30  
#16  
2000V AC



Insert arrangement  
Rated voltage  
Rated current  
Contact number  
Contact size  
Withstanding voltage

27 (NA\*)  
110 VDC  
9A  
27  
#16  
2000V AC

44  
110 VDC  
9A  
44  
#16  
2000V AC

50  
110 VDC  
9A  
50  
#16  
2000V AC

\* NA: not available yet

## HOW TO ORDER

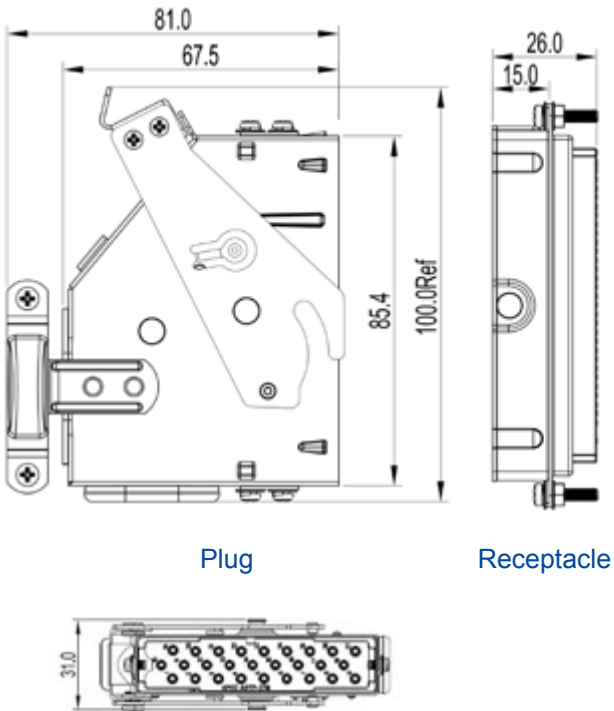
	ASTP	43	01	44	P	LC
<b>Shell type:</b>						
43: Top entry						
44: Receptacle						
45: Side entry						
<b>Alternate keying position:</b>						
01 to 16: 16 alternate keys available (see p.11)						
<b>Insert arrangement:</b>						
27: 27 pins (NA*)						
29: 29 pins (NA*)						
30: 30 pins (NA*)						
44: 44 pins						
50: 50 pins						
<b>Contact type:</b>						
P: Male contact						
S: Female contact						
<b>Contact option:</b>						
Omit: With contacts						
LC: Without contacts						



\* NA: not available yet

## DIMENSIONS

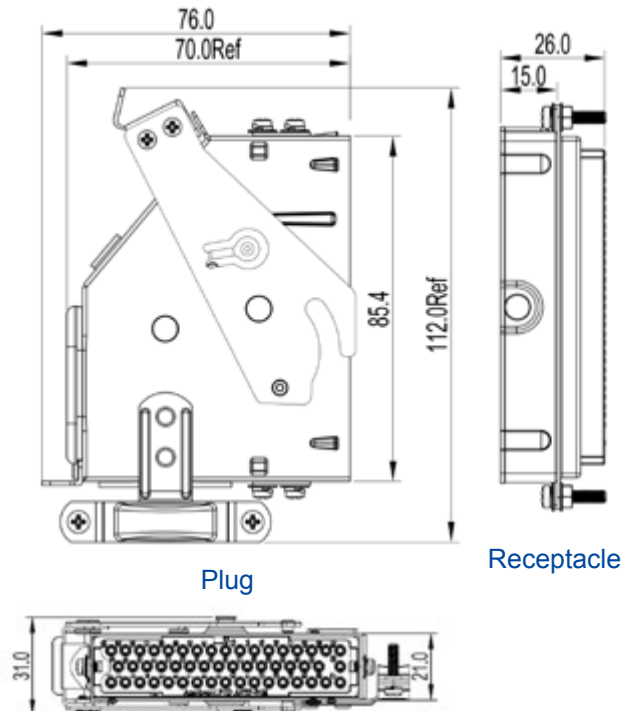
### ALL - TOP ENTRY



Plug

Receptacle

### ALL - SIDE ENTRY



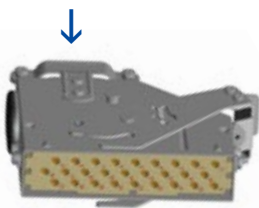
Plug

Receptacle

## #27

### TOP ENTRY

P/N: ASTP430127SLC



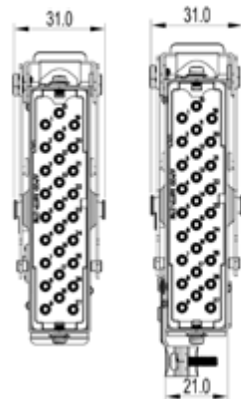
### SIDE ENTRY

P/N: ASTP450127SLC



### RECEPTACLE

P/N: ASTP440127PLC



Insert arrangement	27
Rated voltage	110VDC
Rated current	9A
Contacts	27 x #16
Crimping cable	0.2 to 2.0mm <sup>2</sup>

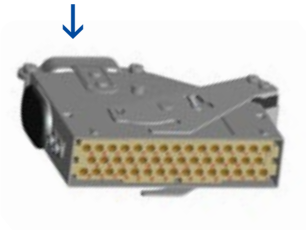


## DIMENSIONS

#44

### TOP ENTRY

P/N: ASTP430144SLC



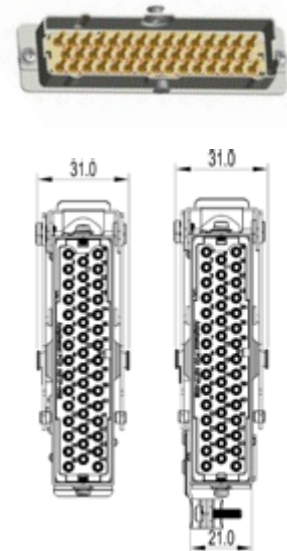
### SIDE ENTRY

P/N: ASTP450127SLC



### RECEPTACLE

P/N: ASTP440144PLC

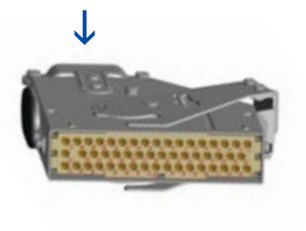


Insert arrangement	44
Rated voltage	110VDC
Rated current	9A
Contacts	44 x #16
Crimping cable	0.2 to 2.0mm <sup>2</sup>

#50

### TOP ENTRY

P/N: ASTP430150SLC



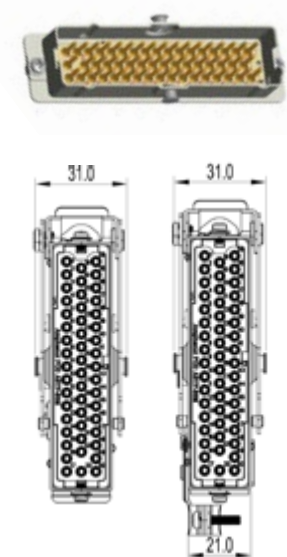
### SIDE ENTRY

P/N: ASTP450150SLC



### RECEPTACLE

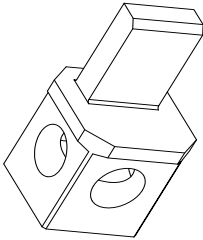
P/N: ASTP440150PLC



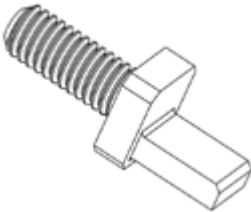
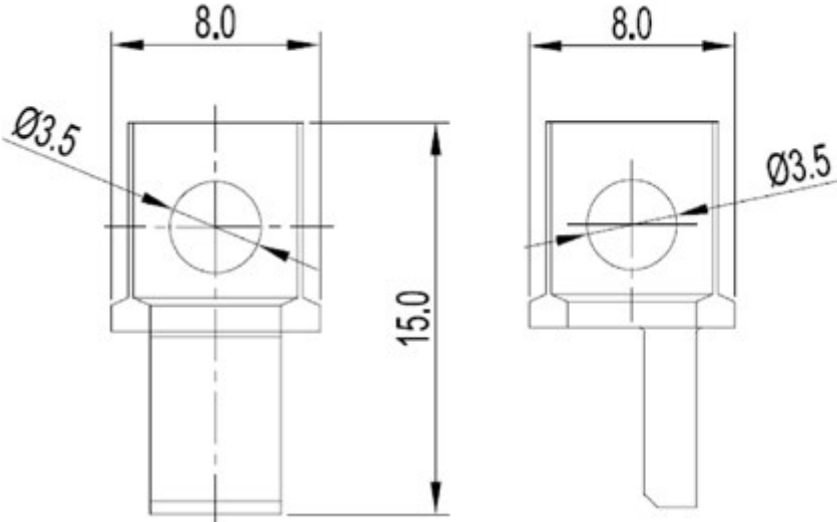
Insert arrangement	50
Rated voltage	110VDC
Rated current	9A
Contacts	50 x #16
Crimping cable	0.2 to 2.0mm <sup>2</sup>

ALTERNATE KEYING POSITIONS - LAYOUT

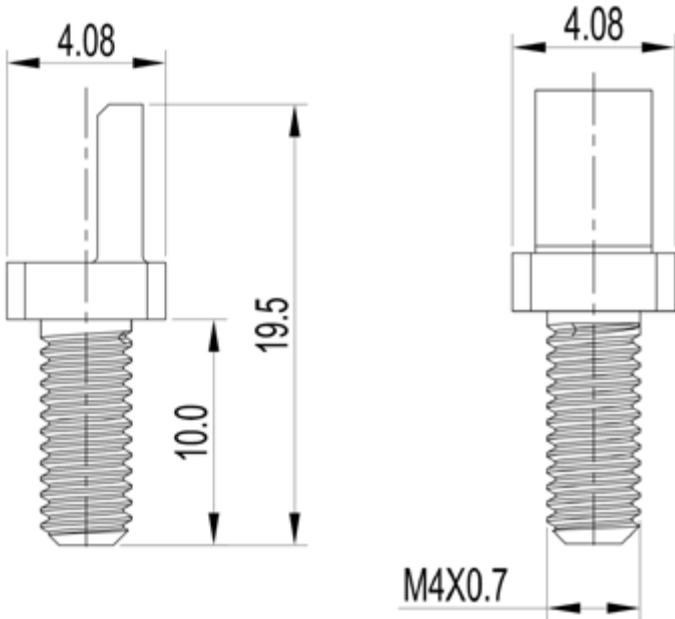
(ORDER SEPARATELY)



P/N: C420000210  
Plug side  
With nut and spring washer



P/N: C420000211  
Receptacle side  
With scw



ALTERNATE KEYING POSITIONS - TABLE

HOW TO READ THE FOLLOWING TABLE:

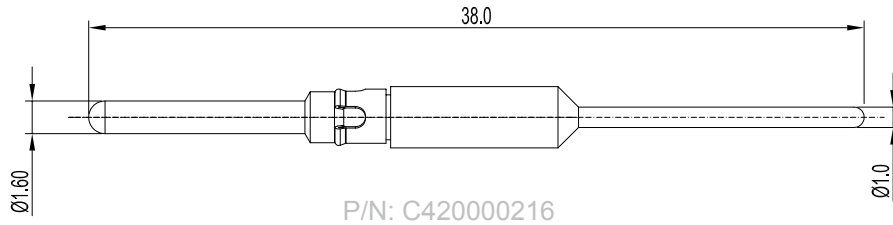


	Receptacle		Plug			Receptacle		Plug	
Item	C420000211		C420000210		Item	C420000211		C420000210	
1					9				
2					10				
3					11				
4					12				
5					13				
6					14				
7					15				
8					16				

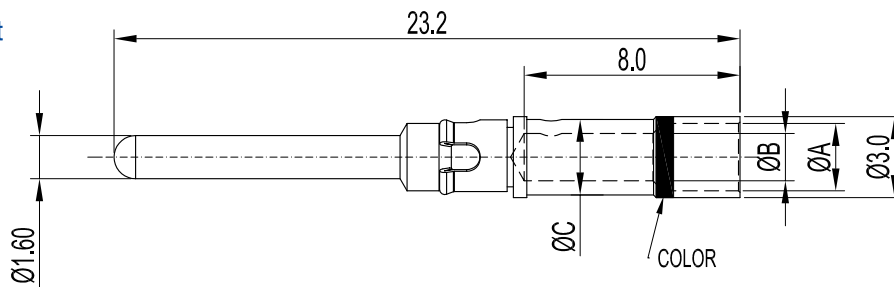
## ACCESSORIES

### MALE CONTACTS

#### Solder contact

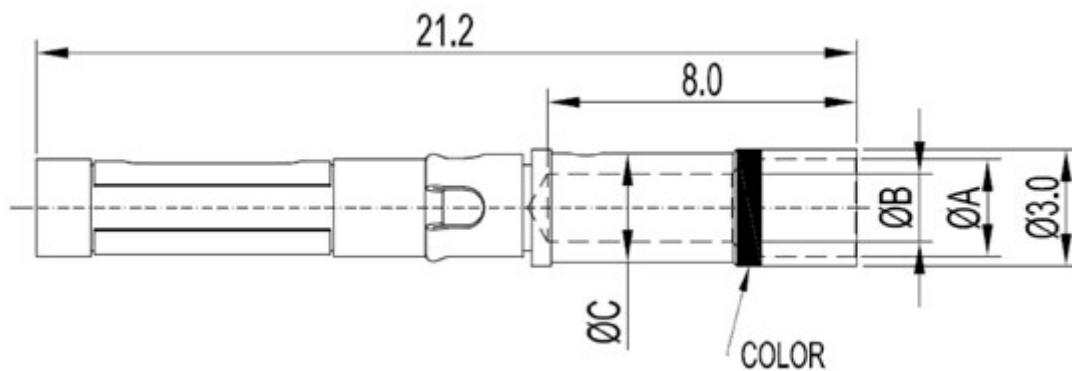


#### Crimp contact



Item	A	B	C	WIRE mm <sup>2</sup>	Color
C42000020201	1.7	1.2	1.8	0.2 to 0.5	RED
C42000020202	2.7	1.2	1.8	0.2 to 0.5	GREEN
C42000020203	2.5	1.75	2.8	0.5 to 1.3	BLUE
C42000020204	2.5	2.1	2.9	1.25 to 2.0	-

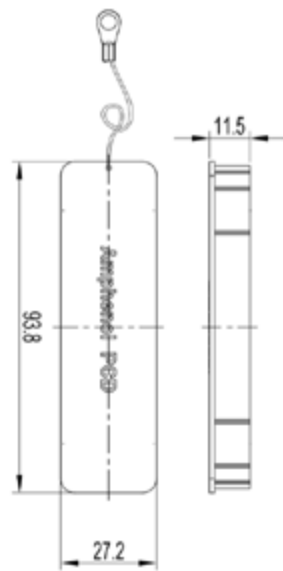
### FEMALE CONTACTS



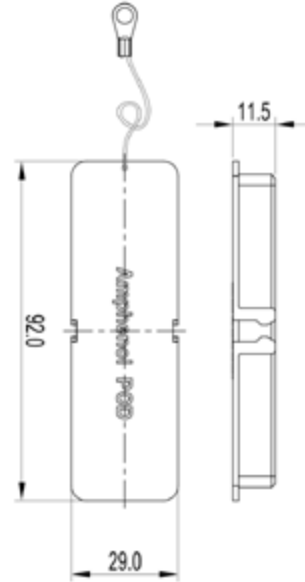
Item	A	B	C	WIRE mm <sup>2</sup>	Color
C42000020301	1.7	1.2	1.8	0.2 to 0.5	RED
C42000020302	2.7	1.2	1.8	0.2 to 0.5	GREEN
C42000020303	2.5	1.75	2.8	0.5 to 1.3	BLUE
C42000020304	2.5	2.1	2.9	1.25 to 2.0	-

## ACCESSORIES

### DUST CAP



Plug side  
P/N: ASTP43DC



Receptacle side  
P/N: ASTP44DC

## TOOLS

Contact size	Section of conductor	Crimping tool	Extraction tool
#16	0.2 to 2.0mm <sup>2</sup>	M22520/1-01	ASTP-R-16

#16 Crimping tool M22520/1-01	#16 Extraction tool ASTP-R-16

Amphenol PCD Shenzhen

Building 21  
1<sup>st</sup> Liao Keng Industrial Zone  
Shi Yan Street, Bao An District Shenzhen 518108  
China

Tel.: +86 755-8173-8000  
Fax: +86 755-8173-8180  
Email: [inquiry@amphenolpcd.com.cn](mailto:inquiry@amphenolpcd.com.cn)

[www.amphenolpcd.com.cn](http://www.amphenolpcd.com.cn)

Notes:

Amphenol PCD Shenzhen has made every effort to ensure that the information contained in this catalog is accurate at the time of publication. Specifications or information stated in this publication are subject to change without notice.

Amphenol PCD Shenzhen reserves the right to clarify this catalog.